

## Recombinant Human NEFL Protein (Ser2-Asp543), N-His-SUMO tagged, Animal-free, Carrier-free

Cat. No. NEFL-233H Lot. No. (See product label)

### SPECIFICATION

<b>Product Overview</b>	Recombinant Human NEFL Protein (Ser2-Asp543) with N-His-SUMO tag was expressed in E. coli and Animal-free as well as Carrier-free.
<b>Species</b>	Human
<b>Source</b>	E.coli
<b>ProteinLength</b>	Ser2-Asp543
<b>Description</b>	Neurofilaments (NF) are assembled as heteropolymers, found exclusively in neurons, and serve as axonal scaffolding. They are composed of three subunits, including NF-L (68 kDa), NF-M (95 kDa), and NF-H (115 kDa), that are essential for axonal growth and maintenance. Elevated NF-L levels in serum and CSF (cerebrospinal fluid) have been correlated with axonal damage in Multiple Sclerosis patients, serving as a prognostic marker. In addition, plasma NF-L concentrations were highly significantly higher in patients with Alzheimer's disease.
<b>Form</b>	Lyophilized
<b>Molecular Mass</b>	The protein has a calculated MW of 73.91 kDa. The protein migrates as 75 kDa under reducing condition (SDS-PAGE analysis).
<b>Endotoxin</b>	< 0.1 EU/μg of the protein by the LAL method.

 Tel: 1-631-559-9269 1-516-512-3133

 Email: [info@creative-biomart.com](mailto:info@creative-biomart.com)  Fax: 1-631-938-8127

 45-1 Ramsey Road, Shirley, NY 11967, USA

<b>Purity</b>	>95% as determined by SDS-PAGE analysis.
<b>Storage</b>	This product is stable after storage at: -20 centigrade for 12 months in lyophilized state from date of receipt. -20 or -80 centigrade for 1 month under sterile conditions after reconstitution. Avoid repeated freeze/thaw cycles.
<b>Storage Buffer</b>	Lyophilized from a 0.2 µm filtered solution of PBS, pH 7.4.
<b>Reconstitution</b>	It is recommended to reconstitute the lyophilized protein in sterile H <sub>2</sub> O to a concentration not less than 200 µg/mL and incubate the stock solution for at least 20 min to ensure sufficient re-dissolved.
<b>Shipping</b>	The product is shipped with polar packs. Upon receipt, store it immediately at -20 centigrade or lower for long term storage.

## GENE INFORMATION

<b>Gene Name</b>	NEFL neurofilament, light polypeptide [ Homo sapiens (human) ]
<b>Official Symbol</b>	NEFL
<b>Synonyms</b>	NEFL; neurofilament, light polypeptide; neurofilament, light polypeptide 68kDa; neurofilament light polypeptide; CMT1F; CMT2E; NF68; NFL; neurofilament subunit NF-L; neurofilament triplet L protein; neurofilament protein, light chain; light molecular weight neurofilament protein; NF-L; FLJ53642;
<b>Gene ID</b>	4747
<b>mRNA Refseq</b>	NM_006158

 Tel: 1-631-559-9269 1-516-512-3133

 Email: [info@creative-biomart.com](mailto:info@creative-biomart.com)  Fax: 1-631-938-8127

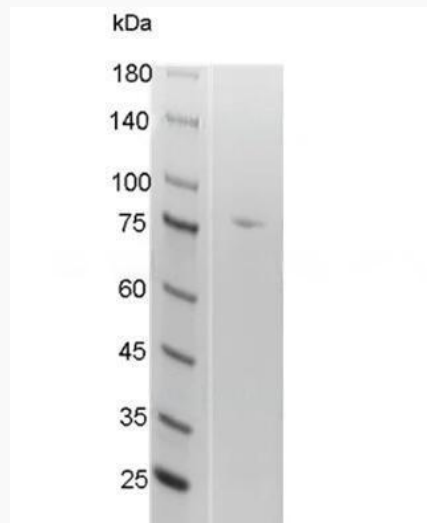
 45-1 Ramsey Road, Shirley, NY 11967, USA

**Protein Refseq** NP\_006149

**MIM** 162280

**UniProt ID** P07196

**SDS-PAGE analysis  
of recombinant  
human NF-L.**



 Tel: 1-631-559-9269 1-516-512-3133

 Email: [info@creative-biomart.com](mailto:info@creative-biomart.com)  Fax: 1-631-938-8127

 45-1 Ramsey Road, Shirley, NY 11967, USA