

Recombinant Rhesus macaque NEFL protein, His-tagged

Cat. No. NEFL-2433R Lot. No. (See product label)

SPECIFICATION

Product Overview	Recombinant Rhesus macaque NEFL protein(F7ED68)(2-543aa), fused with C-terminal His tag, was expressed in Yeast.
Species	Rhesus macaque
Source	Yeast
ProteinLength	2-543aa
Tag	C-His
Form	If the delivery form is liquid, the default storage buffer is Tris/PBS-based buffer, 5%-50% glycerol. If the delivery form is lyophilized powder, the buffer before lyophilization is Tris/PBS-based buffer, 6% Trehalose, pH 8.0.
Molecular Mass	62.9 kDa
Purity	Greater than 90% as determined by SDS-PAGE.
Storage	Store at -20°C/-80°C upon receipt, aliquoting is necessary for mutiple use. Avoid repeated freeze-thaw cycles.
Reconstitution	We recommend that this vial be briefly centrifuged prior to opening to bring the contents to the bottom. Please reconstitute protein in deionized sterile water to a concentration of 0.1-1.0 mg/mL. We recommend to add 5-50% of glycerol (final

 Tel: 1-631-559-9269 1-516-512-3133

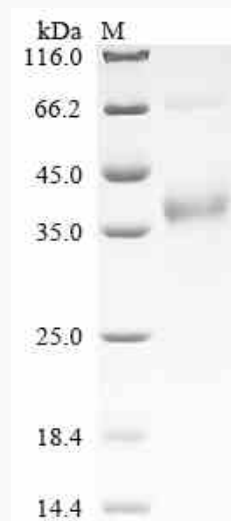
 Email: info@creative-biomart.com  Fax: 1-631-938-8127

 45-1 Ramsey Road, Shirley, NY 11967, USA

concentration) and aliquot for long-term storage at -20°C/-80°C.


AA Sequence

SSFSYEPYYSTSYKRRYVETPRVHISSVRSGYSTARSAYSYSAPVSSLSVRRSYS
SSSGSLMPLENLDSQVAAISNDLKSIRTQEKAQLQDLNDRFASFIERVHELEQQN
KVLEAELLVLRQKHSEPSRFRALYEQEIRDLRLAAEDATNEKQALQGEREGLEETLR
NLQARYEEEEVLSREDAEGRLMEARKGADEAALARAELEKRIDSLMDEIAFLKKVHEE
EIAELQAQIQYAQISVEMDVSKPDLAALKDIRAQYEKLAAKNMQNAEEWFKSRFTV
LTESAANKNTDAVRAAKDEVSESRLLKAKTLEIEACRGMNEALEKQLQELEDKQNAD
ISAMQDTINKLENELRTTKSEMARYLKEYQDLLNVKMALDIEIAAYRKLLEGEETRLSF
TSVGSITSGYSQSSQVFGRSAYGGLQTSSYLMSTRSFPSYYTSHVQEEQIEVEETIE
AAKAEAKDEPPSEGEAEKEEKKDKEEAEKEEAEKEEAEKEEAEKEEAEKEEAEKEE
EGEETKEAEKEEKKVEGAGEEQAAKKKD

SDS-PAGE

 Tel: 1-631-559-9269 1-516-512-3133

 Email: info@creative-biomart.com  Fax: 1-631-938-8127

 45-1 Ramsey Road, Shirley, NY 11967, USA