

Recombinant Human NEFL Protein, His-tagged

Cat. No. NEFL-2484H **Lot. No.** (See product label)

SPECIFICATION

Product Overview	Recombinant Human NEFL Protein (Lys281-Glu396) with a N-His tag was expressed in E. coli.
Species	Human
Source	E.coli
ProteinLength	Lys281-Glu396
Description	Neurofilaments are type IV intermediate filament heteropolymers composed of light, medium, and heavy chains. Neurofilaments comprise the axoskeleton and they functionally maintain the neuronal caliber. They may also play a role in intracellular transport to axons and dendrites. This gene encodes the light chain neurofilament protein. Mutations in this gene cause Charcot-Marie-Tooth disease types 1F (CMT1F) and 2E (CMT2E), disorders of the peripheral nervous system that are characterized by distinct neuropathies. A pseudogene has been identified on chromosome Y.
Form	Freeze-dried powder
Molecular Mass	Predicted Molecular Mass: 17.0 kDa Accurate Molecular Mass: \
Endotoxin	<1.0 EU per 1g (determined by the LAL method).
Purity	> 90%

 Tel: 1-631-559-9269 1-516-512-3133

 Email: info@creative-biomart.com  Fax: 1-631-938-8127

 45-1 Ramsey Road, Shirley, NY 11967, USA

Applications	Positive Control; Immunogen; SDS-PAGE; WB.
Stability	The thermal stability is described by the loss rate. The loss rate was determined by accelerated thermal degradation test, that is, incubate the protein at 37 centigrade for 48h, and no obvious degradation and precipitation were observed. The loss rate is less than 5% within the expiration date under appropriate storage condition.
Storage	Avoid repeated freeze/thaw cycles. Store at 2-8 centigrade for one month. Aliquot and store at -80 centigrade for 12 months.
Storage Buffer	20mM Tris, 150mM NaCl, pH8.0, containing 1mM EDTA, 1mM DTT, 0.01% SKL, 5% Trehalose and Proclin300.
Reconstitution	Reconstitute in 20mM Tris, 150mM NaCl (pH8.0) to a concentration of 0.1-1.0 mg/mL. Do not vortex.

GENE INFORMATION

Gene Name	NEFL neurofilament, light polypeptide [Homo sapiens (human)]
Official Symbol	NEFL
Synonyms	NEFL; neurofilament, light polypeptide; neurofilament, light polypeptide 68kDa; neurofilament light polypeptide; CMT1F; CMT2E; NF68; NFL; neurofilament subunit NF-L; neurofilament triplet L protein; neurofilament protein, light chain; light molecular weight neurofilament protein; NF-L; FLJ53642;
Gene ID	4747
mRNA Refseq	NM_006158

 Tel: 1-631-559-9269 1-516-512-3133

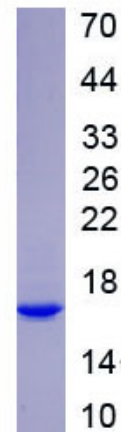
 Email: info@creative-biomart.com  Fax: 1-631-938-8127

 45-1 Ramsey Road, Shirley, NY 11967, USA

Protein Refseq NP_006149

MIM 162280

UniProt ID P07196



 Tel: 1-631-559-9269 1-516-512-3133

 Email: info@creative-biomart.com  Fax: 1-631-938-8127

 45-1 Ramsey Road, Shirley, NY 11967, USA