

Recombinant Human NEFL protein(91-510 aa), C-His-tagged

Cat. No. NEFL-2573H Lot. No. (See product label)

SPECIFICATION

Product Overview	Recombinant Human NEFL protein(P07196)(91-510 aa), fused with C-terminal His tag, was expressed in E. coli.
Species	Human
Source	E.coli
ProteinLength	91-510 aa
Form	0.15 M Phosphate buffered saline
Molecular Mass	50.5 kDa
Storage	Shipped on dry ice. Avoid repeated freeze-thaw cycles. Upon receipt, 2 days when stored at 2 to 8 °C after thawing. Up to 12 months when aliquoted and stored at -20 to -80°C.
Reconstitution	It is recommended that sterile water be added to the vial to prepare a stock solution of 0.2 ug/ul. Centrifuge the vial at 4°C before opening to recover the entire contents.
AA Sequence	KAQLQDLNDRFASFIERVHELEQQNKVLEAELLVLRQKHSEPSRFRALYEQEIRDLR LAAEDATNEKQALQGEREGLEETLRNLQARYEEEEVLSREDAEGRLMEARKGADEAA LARAELEKRIDSLMDEISFLKKVHEEEIAELQAQIQYAQISVEMDVTKPDLSAALKDIR AQYEKLAAKNMQNAEEWFKSRFTVLTESAAKNTDAVRAAKDEVSESRLLKAKTLEI EACRGMNEALEKQLQELEDKQNADISAMQDTINKLENELRRTTKSEMARYLKEYQDLL

 Tel: 1-631-559-9269 1-516-512-3133

 Email: info@creative-biomart.com  Fax: 1-631-938-8127

 45-1 Ramsey Road, Shirley, NY 11967, USA

NVKMALDIEIAAYRKLLEGEETRLSFTSVGSITSGYSQSSQVFGRSAYGGLQTSSYL
MSTRSFPSYYTSHVQEEQIEVEETIEAAKAEAAKDEPPSEGEAEKDKKEEAEKKEE
AAEKEEAAKEESEEAKKEE

GENE INFORMATION

Gene Name [NEFL neurofilament, light polypeptide \[Homo sapiens \]](#)

Official Symbol [NEFL](#)

Synonyms

NEFL; neurofilament, light polypeptide; neurofilament, light polypeptide 68kDa; neurofilament light polypeptide; CMT1F; CMT2E; NF68; NFL; neurofilament subunit NF-L; neurofilament triplet L protein; neurofilament protein, light chain; light molecular weight neurofilament protein; NF-L; FLJ53642;

Gene ID [4747](#)

mRNA Refseq [NM_006158](#)

Protein Refseq [NP_006149](#)

MIM [162280](#)

UniProt ID [P07196](#)

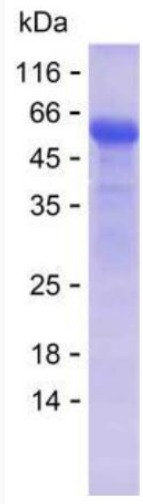
 Tel: 1-631-559-9269 1-516-512-3133

 Email: info@creative-biomart.com  Fax: 1-631-938-8127

 45-1 Ramsey Road, Shirley, NY 11967, USA



SDS-PAGE



Tel: 1-631-559-9269 1-516-512-3133

Email: info@creative-biomart.com Fax: 1-631-938-8127

45-1 Ramsey Road, Shirley, NY 11967, USA