

## Recombinant Human NEFL protein, His-SUMO-tagged

**Cat. No.** NEFL-4533H    **Lot. No.** (See product label)

### SPECIFICATION

<b>Product Overview</b>	Recombinant Human NEFL protein(P07196)(50-400aa), fused with C-terminal His and SUMO tag, was expressed in E.coli.
<b>Species</b>	Human
<b>Source</b>	E.coli
<b>ProteinLength</b>	50-400aa
<b>Form</b>	If the delivery form is liquid, the default storage buffer is Tris/PBS-based buffer, 5%-50% glycerol. If the delivery form is lyophilized powder, the buffer before lyophilization is Tris/PBS-based buffer, 6% Trehalose, pH 8.0.
<b>Molecular Mass</b>	52.4 kDa
<b>Purity</b>	Greater than 85% as determined by SDS-PAGE.
<b>Storage</b>	Store at -20°C/-80°C upon receipt, aliquoting is necessary for mutiple use. Avoid repeated freeze-thaw cycles.
<b>Reconstitution</b>	We recommend that this vial be briefly centrifuged prior to opening to bring the contents to the bottom. Please reconstitute protein in deionized sterile water to a concentration of 0.1-1.0 mg/mL. We recommend to add 5-50% of glycerol (final concentration) and aliquot for long-term storage at -20°C/-80°C.

 Tel: 1-631-559-9269    1-516-512-3133

 Email: [info@creative-biomart.com](mailto:info@creative-biomart.com)     Fax: 1-631-938-8127

 45-1 Ramsey Road, Shirley, NY 11967, USA

**AA Sequence**

SLSVRRSYSSSSGSLMPSLENLDLSQVAAISNDLKSIRTQEKAQLQDLNDRFASFIER  
 VHELEQQNKVLEAELLVLRQKHSEPSRFRALYEQEIRDLRLAAEDATNEKQALQGER  
 EGLEETLRNLQARYEEEEVLSREDAEGRLMEARKGADEAALARAELEKRIDSLMDEIS  
 FLKKVHEEEIAELQAQIQYAQISVEMDVTKPDLSAALKDIRAQYEKLAAKNMQNAEE  
 WFKSRFTVLTESAANKNTDAVRAAKDEVSESRLLKAKTLEIEACRGMNEALEKQLQE  
 LEDKQNADISAMQDTINKLENELRTTKSEMARYLKEYQDLLNVKMALDIEIAAYRKLL  
 EGEETRL

## GENE INFORMATION

**Gene Name** [NEFL neurofilament, light polypeptide \[ Homo sapiens \]](#)

**Official Symbol** [NEFL](#)

**Synonyms**

NEFL; neurofilament, light polypeptide; neurofilament, light polypeptide 68kDa;  
 neurofilament light polypeptide; CMT1F; CMT2E; NF68; NFL; neurofilament subunit  
 NF-L; neurofilament triplet L protein; neurofilament protein, light chain; light molecular  
 weight neurofilament protein; NF-L; FLJ53642;

**Gene ID** [4747](#)

**mRNA Refseq** [NM\\_006158](#)

**Protein Refseq** [NP\\_006149](#)

**MIM** [162280](#)

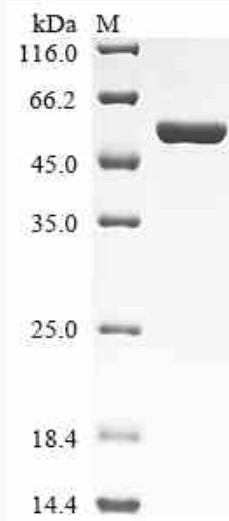
**UniProt ID** [P07196](#)

 Tel: 1-631-559-9269 1-516-512-3133

 Email: [info@creative-biomart.com](mailto:info@creative-biomart.com)  Fax: 1-631-938-8127

 45-1 Ramsey Road, Shirley, NY 11967, USA

**SDS-PAGE**



 Tel: 1-631-559-9269 1-516-512-3133

 Email: [info@creative-biomart.com](mailto:info@creative-biomart.com)  Fax: 1-631-938-8127

 45-1 Ramsey Road, Shirley, NY 11967, USA