

## Recombinant Human NEFL Protein (Met1-Asn352), N-His tagged

Cat. No. NEFL-4679H Lot. No. (See product label)

### SPECIFICATION

<b>Product Overview</b>	Recombinant human NEFL (Met1-Asn352) fused with the N-His tag was expressed in E. coli.
<b>Species</b>	Human
<b>Source</b>	E.coli
<b>ProteinLength</b>	Met1-Asn352
<b>Form</b>	Lyophilized powder/frozen liquid
<b>Molecular Mass</b>	42.41 kDa
<b>Purity</b>	>90% as determined by SDS-PAGE.
<b>Notes</b>	For research use only.
<b>Storage</b>	Use a manual defrost freezer and avoid repeated freeze thaw cycles. Store at 2 to 8 centigrade for one week. Store at -20 to -80 centigrade for twelve months from the date of receipt.
<b>Storage Buffer</b>	0.01M PBS, pH 7.4, 0.02% NLS
<b>Reconstitution</b>	Reconstitute in sterile water for a stock solution.

 Tel: 1-631-559-9269 1-516-512-3133

 Email: [info@creative-biomart.com](mailto:info@creative-biomart.com)  Fax: 1-631-938-8127

 45-1 Ramsey Road, Shirley, NY 11967, USA

**Shipping** They are shipped out with dry ice/blue ice unless customers require otherwise.

## GENE INFORMATION

**Gene Name** NEFL neurofilament, light polypeptide [ Homo sapiens (human) ]

**Official Symbol** NEFL

**Synonyms** NEFL; neurofilament, light polypeptide; neurofilament, light polypeptide 68kDa; neurofilament light polypeptide; CMT1F; CMT2E; NF68; NFL; neurofilament subunit NF-L; neurofilament triplet L protein; neurofilament protein, light chain; light molecular weight neurofilament protein; NF-L; FLJ53642;

**Gene ID** 4747

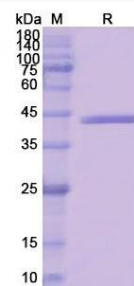
**mRNA Refseq** NM\_006158

**Protein Refseq** NP\_006149

**MIM** 162280

**UniProt ID** P07196

### SDS-PAGE



 Tel: 1-631-559-9269 1-516-512-3133

 Email: [info@creative-biomart.com](mailto:info@creative-biomart.com)  Fax: 1-631-938-8127

 45-1 Ramsey Road, Shirley, NY 11967, USA