

## Recombinant Full Length Human NEFL protein

Cat. No. NEFL-542H Lot. No. (See product label)

### SPECIFICATION

<b>Product Overview</b>	Recombinant Human SLC34A2 protein(Val234~Leu362), fused with N-terminal His and GST tag, was expressed in E.coli.
<b>Species</b>	Human
<b>Source</b>	E.coli
<b>ProteinLength</b>	2-543 a.a.
<b>Tag</b>	N-His-GST
<b>Form</b>	PBS, pH7.4, containing 0.01% SKL, 5% Trehalose.
<b>Molecular Mass</b>	46kDa
<b>Endotoxin</b>	<1.0EU per 1µg (determined by the LAL method).
<b>Purity</b>	> 80%
<b>Storage</b>	Avoid repeated freeze/thaw cycles. Store at 2-8°C for one month. Aliquot and store at -80°C for 12 months.
<b>Reconstitution</b>	Reconstitute in 10mM PBS (pH7.4) to a concentration of 0.1-1.0 mg/mL. Do not vortex.

 Tel: 1-631-559-9269 1-516-512-3133

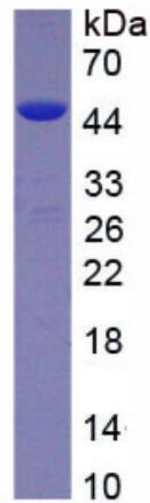
 Email: [info@creative-biomart.com](mailto:info@creative-biomart.com)  Fax: 1-631-938-8127

 45-1 Ramsey Road, Shirley, NY 11967, USA

## GENE INFORMATION

<b>Gene Name</b>	SLC34A2 solute carrier family 34 member 2 [ Homo sapiens (human) ]
<b>Official Symbol</b>	SLC34A2
<b>Synonyms</b>	NPTIIb; NAPI-3B; NAPI-lib; SLC34A2
<b>Gene ID</b>	10568
<b>mRNA Refseq</b>	NM_001177999
<b>Protein Refseq</b>	NP_001171470
<b>UniProt ID</b>	O95436

### SDS-PAGE



 Tel: 1-631-559-9269 1-516-512-3133

 Email: [info@creative-biomart.com](mailto:info@creative-biomart.com)  Fax: 1-631-938-8127

 45-1 Ramsey Road, Shirley, NY 11967, USA