

Recombinant Human NEFM protein(101-650 aa), C-His-tagged

Cat. No. NEFM-2575H Lot. No. (See product label)

SPECIFICATION

Product Overview	Recombinant Human NEFM protein(P07197)(101-650 aa), fused with C-terminal His tag, was expressed in E. coli.
Species	Human
Source	E.coli
ProteinLength	101-650 aa
Form	0.15 M Phosphate buffered saline
Molecular Mass	66 kDa
Storage	Shipped on dry ice. Avoid repeated freeze-thaw cycles. Upon receipt, 2 days when stored at 2 to 8 °C after thawing. Up to 12 months when aliquoted and stored at -20 to -80°C.
Reconstitution	It is recommended that sterile water be added to the vial to prepare a stock solution of 0.2 ug/ul. Centrifuge the vial at 4°C before opening to recover the entire contents.
AA Sequence	EKEQLQGLNDRFAGYIEKVHYLEQQNKEIEAEIQALRQKQASHAQLGDAYDQEIREL RATLEMVNHEKAQVQLDSDHLEEDIHRLKERFEEEARLRDDTEAAIRALRKDIEEASL VKVELDKKVQSLQDEVAFLRSNHEEEVADLLAQIQASHITVERKDYLKTDISTALKEIR SQLESHSDQNMHQAEWFKCRYAKLTEAAEQNKEAIRSAKEEIAEYRRQLQSKSIEL ESVRGTKESLERQLSDIEERHNHDLSSYQDTIQQLENELRGTKWEMARHLREYQDL

 Tel: 1-631-559-9269 1-516-512-3133

 Email: info@creative-biomart.com  Fax: 1-631-938-8127

 45-1 Ramsey Road, Shirley, NY 11967, USA

LNVKMALDIEIAAYRKLLERGEETRFSTFAGSITGPLYTHRPPITISSKIQKPKVEAPKLK
 VQHKFVEEIIIEETKVEDEKSEMEEALTAITEELAVSMKEEKKEAAEEKEEEPEAEESSE
 VAAKKSPVKATAPEVKEEEGEKEEEEGQEEEEEEDEGAKSDQAEEGGSEKEGSSE
 KEEGEQEEGETEAEAEGEEAEAKEEKKVEEKSEEVATKEELVADAKVEKPEKAKSP
 VPKSPVEEKKGKSPVPKSPVEEKKGKSPVPKSPVEE

GENE INFORMATION

Gene Name [NEFM neurofilament, medium polypeptide \[Homo sapiens \]](#)

Official Symbol [NEFM](#)

Synonyms NEFM; neurofilament, medium polypeptide; NEF3, neurofilament, medium polypeptide 150kDa; neurofilament medium polypeptide; NF M; NFM; neurofilament 3; 160 kDa neurofilament protein; neurofilament triplet M protein; neurofilament-3 (150 kD medium); neurofilament, medium polypeptide 150kDa; NEF3; NF-M;

Gene ID [4741](#)

mRNA Refseq [NM_001105541](#)

Protein Refseq [NP_001099011](#)

MIM [162250](#)

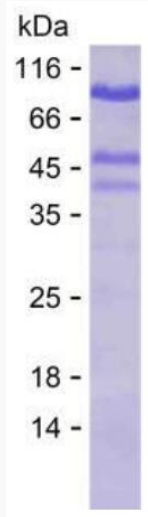
UniProt ID [P07197](#)

 Tel: 1-631-559-9269 1-516-512-3133

 Email: info@creative-biomart.com  Fax: 1-631-938-8127

 45-1 Ramsey Road, Shirley, NY 11967, USA

SDS-PAGE



 Tel: 1-631-559-9269 1-516-512-3133

 Email: info@creative-biomart.com  Fax: 1-631-938-8127

 45-1 Ramsey Road, Shirley, NY 11967, USA