

Recombinant Human NEFM protein, His-tagged

Cat. No. NEFM-2785H Lot. No. (See product label)

SPECIFICATION

Product Overview	Recombinant Human NEFM protein(P07197)(487-740aa), fused with C-terminal His tag, was expressed in Yeast.
Species	Human
Source	Yeast
ProteinLength	487-740aa
Tag	C-His
Form	If the delivery form is liquid, the default storage buffer is Tris/PBS-based buffer, 5%-50% glycerol. If the delivery form is lyophilized powder, the buffer before lyophilization is Tris/PBS-based buffer, 6% Trehalose, pH 8.0.
Molecular Mass	29.3 kDa
Purity	Greater than 85% as determined by SDS-PAGE.
Storage	Store at -20°C/-80°C upon receipt, aliquoting is necessary for mutiple use. Avoid repeated freeze-thaw cycles.
Reconstitution	We recommend that this vial be briefly centrifuged prior to opening to bring the contents to the bottom. Please reconstitute protein in deionized sterile water to a concentration of 0.1-1.0 mg/mL. We recommend to add 5-50% of glycerol (final

 Tel: 1-631-559-9269 1-516-512-3133

 Email: info@creative-biomart.com  Fax: 1-631-938-8127

 45-1 Ramsey Road, Shirley, NY 11967, USA

concentration) and aliquot for long-term storage at -20°C/-80°C.

AA Sequence

EKKEAAEEKEEEPEAEVVAAKKSPVKATAPEVKEEEGEKEEEEGQEEEEEEDEG
 AKSDQAEEGGSEKEGSSEKEEGEQEEGETEAEAEEGEEAEAKEEKKVEEKSEEVAT
 KEELVADAKVEKPEKAKSPVPKSPVEEKKGKSPVPKSPVEEKKGKSPVPKSPVEEKKGK
 SPVPKSPVEEKKGKSPVSKSPVEEKAKSPVPKSPVEEAKSKAEVVGKGEQKEEEEEKEV
 KEAPKEEKVEKKEEKPKDVPEKKAESPVKE

GENE INFORMATION

Gene Name [NEFM neurofilament, medium polypeptide \[Homo sapiens \]](#)

Official Symbol [NEFM](#)

Synonyms NEFM; neurofilament, medium polypeptide; NEF3, neurofilament, medium polypeptide 150kDa; neurofilament medium polypeptide; NF M; NFM; neurofilament 3; 160 kDa neurofilament protein; neurofilament triplet M protein; neurofilament-3 (150 kD medium); neurofilament, medium polypeptide 150kDa; NEF3; NF-M;

Gene ID [4741](#)

mRNA Refseq [NM_001105541](#)

Protein Refseq [NP_001099011](#)

MIM [162250](#)

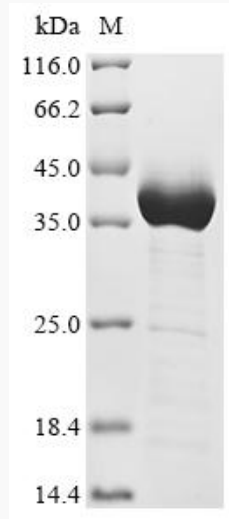
UniProt ID [P07197](#)

 Tel: 1-631-559-9269 1-516-512-3133

 Email: info@creative-biomart.com  Fax: 1-631-938-8127

 45-1 Ramsey Road, Shirley, NY 11967, USA

SDS-PAGE



 Tel: 1-631-559-9269 1-516-512-3133

 Email: info@creative-biomart.com  Fax: 1-631-938-8127

 45-1 Ramsey Road, Shirley, NY 11967, USA