

Recombinant Human NEGR1 protein, His-tagged

Cat. No. NEGR1-013H Lot. No. (See product label)

SPECIFICATION

Product Overview	Recombinant Human NEGR1 protein(NP_776169.2) (Met 1-Gly 324) without the propeptide was expressed in HEK293, with a polyhistidine tag at the C-terminus.
Species	Human
Source	HEK293
ProteinLength	1-324 aa
Form	Lyophilized from sterile PBS, pH 7.4.
Molecular Mass	The secreted mature form of recombinant human NEGR1 consists of 298 amino acids and predicts a molecular mass of 32.9 kDa. In SDS-PAGE under reducing conditions, the apparent molecular mass of rh NEGR1 is approximately 45-48 kDa due to glycosylation.
Endotoxin	< 1.0 EU per µg of the protein as determined by the LAL method.
Purity	> 95 % as determined by SDS-PAGE
Storage	Store it under sterile conditions at -20°C to -80°C upon receiving. Recommend to aliquot the protein into smaller quantities for optimal storage. Avoid repeated freeze-thaw cycles.
Reconstitution	It is recommended that sterile water be added to the vial to prepare a stock solution of

 Tel: 1-631-559-9269 1-516-512-3133

 Email: info@creative-biomart.com  Fax: 1-631-938-8127

 45-1 Ramsey Road, Shirley, NY 11967, USA

0.2 ug/ul. Centrifuge the vial at 4°C before opening to recover the entire contents.

protein Refseq-Weblink http://www.ncbi.nlm.nih.gov/protein/NP_776169.2

Unit ID Q7Z3B1

Unit ID-Weblink <https://www.uniprot.org/uniprotkb/Q7Z3B1>

GENE INFORMATION

Gene Name [NEGR1 neuronal growth regulator 1 \[Homo sapiens \]](#)

Official Symbol [NEGR1](#)

Synonyms NEGR1; neuronal growth regulator 1; a kindred of IgLON; IgLON family member 4; IGLON4; KILON; MGC46680; neurotractin; Ntra; DMML2433;

Gene ID [257194](#)

mRNA Refseq [NM_173808](#)

protein Refseq [NP_776169](#)

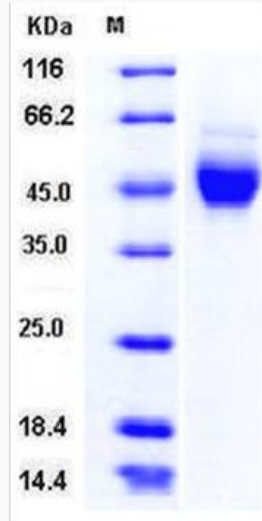
MIM [613173](#)

 Tel: 1-631-559-9269 1-516-512-3133

 Email: info@creative-biomart.com  Fax: 1-631-938-8127

 45-1 Ramsey Road, Shirley, NY 11967, USA

SDS-PAGE



 Tel: 1-631-559-9269 1-516-512-3133

 Email: info@creative-biomart.com  Fax: 1-631-938-8127

 45-1 Ramsey Road, Shirley, NY 11967, USA