

Active Recombinant Full Length Human NEK2 Protein

Cat. No. NEK2-2744HF Lot. No. (See product label)

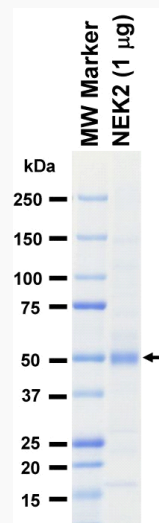
SPECIFICATION

Product Overview	Full-length human NEK2 [1-445(end) amino acids of accession number NP_002488.1] was expressed as N-terminal His-tagged protein (55 kDa) using baculovirus expression system. His-tagged NEK2 was purified by using Ni-NTA affinity chromatography. Purified His-NEK2 was digested by recombinant His-TEV protease, and His-tag free NEK2 (ca. 52 kDa) was collected as flow-through fraction from Ni-NTA affinity chromatography.
Species	Human
Source	Sf21 Cells
ProteinLength	1-445
Form	50 mM Tris-HCl, 150 mM NaCl, 0.05% Brij35, 1 mM DTT, 10% glycerol, pH7.5
Bio-activity	The activity was measured by off-chip mobility shift assay(MSA). The enzyme was incubated with fluorescence-labeled substrate and Mg(or Mn)/ATP. The phosphorylated and unphosphorylated substrates were separated and detected by MSA device.
Purity	73%
Applications	SDS-PAGE
Storage	Store at -80C. Avoid repeating freeze-thaws.

 Tel: 1-631-559-9269 1-516-512-3133

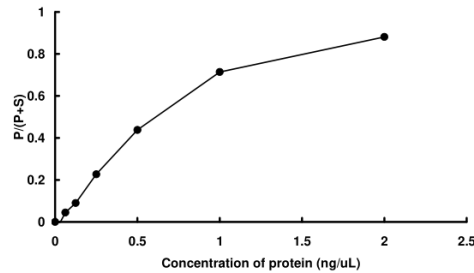
 Email: info@creative-biomart.com  Fax: 1-631-938-8127

 45-1 Ramsey Road, Shirley, NY 11967, USA

GENE INFORMATION**Gene Name** NIMA (never in mitosis gene a)-related kinase 2**Official Symbol** NEK2**Synonyms** NEK2;HsPK21;NEK2A;NLK1;PPP1R111;RP67**Protein Refseq** [NP_002488.1](#)**UniProt ID** [P51955](#)**SDS-PAGE**

The purity was assessed by SDS-PAGE/CBB staining.

 Tel: 1-631-559-9269 1-516-512-3133 Email: info@creative-biomart.com  Fax: 1-631-938-8127 45-1 Ramsey Road, Shirley, NY 11967, USA

Activity data**Activity data**

The activity was measured by off-chip mobility shift assay(MSA). The enzyme was incubated with fluorescence-labeled substrate and Mg(or Mn)/ATP. The phosphorylated and unphosphorylated substrates were separated and detected by MSA device.

 Tel: 1-631-559-9269 1-516-512-3133

 Email: info@creative-biomart.com  Fax: 1-631-938-8127

 45-1 Ramsey Road, Shirley, NY 11967, USA