

Recombinant Human NEK2 Protein (Lys125-Leu212), N-His tagged

Cat. No. NEK2-4681H Lot. No. (See product label)

SPECIFICATION

Product Overview	Recombinant human NEK2 (Lys125-Leu212) fused with the N-His tag was expressed in E. coli.
Species	Human
Source	E.coli
ProteinLength	Lys125-Leu212
Form	Lyophilized powder/frozen liquid
Molecular Mass	12.36 kDa
Purity	>90% as determined by SDS-PAGE.
Notes	For research use only.
Storage	Use a manual defrost freezer and avoid repeated freeze thaw cycles. Store at 2 to 8 centigrade for one week. Store at -20 to -80 centigrade for twelve months from the date of receipt.
Storage Buffer	0.01M PBS, pH 7.4, 0.02% NLS
Reconstitution	Reconstitute in sterile water for a stock solution.

 Tel: 1-631-559-9269 1-516-512-3133

 Email: info@creative-biomart.com  Fax: 1-631-938-8127

 45-1 Ramsey Road, Shirley, NY 11967, USA

Shipping

They are shipped out with dry ice/blue ice unless customers require otherwise.

GENE INFORMATION

Gene Name [NEK2 NIMA \(never in mitosis gene a\) -related kinase 2 \[Homo sapiens \(human\) \]](#)

Official Symbol [NEK2](#)

Synonyms NEK2; NIMA (never in mitosis gene a) -related kinase 2; serine/threonine-protein kinase Nek2; HsPK 21; NEK2A; NLK1; nimA-like protein kinase 1; nimA-related protein kinase 2; HsPK21;

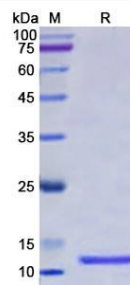
Gene ID [4751](#)

mRNA Refseq [NM_001204182](#)

Protein Refseq [NP_001191111](#)

MIM [604043](#)

UniProt ID [P51955](#)

SDS-PAGE


 Tel: 1-631-559-9269 1-516-512-3133

 Email: info@creative-biomart.com  Fax: 1-631-938-8127

 45-1 Ramsey Road, Shirley, NY 11967, USA