

Recombinant Human NEK7 protein(1-302aa), His-SUMO-tagged

Cat. No. NEK7-6161H **Lot. No.** (See product label)

SPECIFICATION

Product Overview	Recombinant Human NEK7 protein(Q8TDX7)(1-302aa), fused with N-terminal His and SUMO tag, was expressed in E.coli.
Species	Human
Source	E.coli
ProteinLength	1-302aa
Form	If the delivery form is liquid, the default storage buffer is Tris/PBS-based buffer, 5%-50% glycerol. If the delivery form is lyophilized powder, the buffer before lyophilization is Tris/PBS-based buffer, 6% Trehalose, pH 8.0.
Molecular Mass	47.5 kDa
Purity	Greater than 90% as determined by SDS-PAGE.
Storage	Store at -20°C/-80°C upon receipt, aliquoting is necessary for multiple use. Avoid repeated freeze-thaw cycles.
Reconstitution	We recommend that this vial be briefly centrifuged prior to opening to bring the contents to the bottom. Please reconstitute protein in deionized sterile water to a concentration of 0.1-1.0 mg/mL. We recommend to add 5-50% of glycerol (final concentration) and aliquot for long-term storage at -20°C/-80°C.

 Tel: 1-631-559-9269 1-516-512-3133

 Email: info@creative-biomart.com  Fax: 1-631-938-8127

 45-1 Ramsey Road, Shirley, NY 11967, USA

AA Sequence

MDEQSQGMQGPVPQFQPQKALRPDMGYNTLANFRIEKKIGRGQFSEVYRAACLL
 DGVPVALKKVQIFDLMDAKARADCIKEIDLLKQLNHPNVIKYYASFIEDNELNIVLELAD
 AGDLSRMIKHFKKQKRLIPERTVWKYFVQLCSALEHMHSRRVMHRDIKPANVFITAT
 GVVKLGDGLGRFFSSKTTAAHSLVGTPYYMSPERIHENGYNFKSDIWSLGCLLYEM
 AALQSPFYGDKMNLVSLCKKIEQCDYPPPLPSDHYSEELRQLVNMCIINPDPEKRPDVT
 YVYDVAKRMHACTASS

GENE INFORMATION

Gene Name [NEK7 NIMA \(never in mitosis gene a\)-related kinase 7 \[Homo sapiens \]](#)

Official Symbol [NEK7](#)

Synonyms [NEK7](#); [NIMA \(never in mitosis gene a\)-related kinase 7](#); [serine/threonine-protein kinase Nek7](#); [nimA-related protein kinase 7](#); [never in mitosis A-related kinase 7](#);

Gene ID [140609](#)

mRNA Refseq [NM_133494](#)

Protein Refseq [NP_598001](#)

MIM [606848](#)

UniProt ID [Q8TDX7](#)

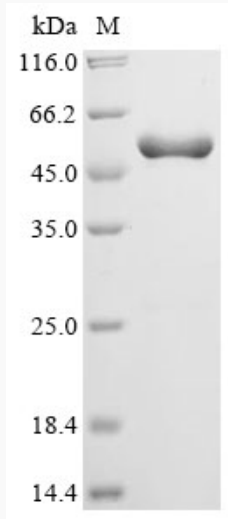
 Tel: 1-631-559-9269 1-516-512-3133

 Email: info@creative-biomart.com  Fax: 1-631-938-8127

 45-1 Ramsey Road, Shirley, NY 11967, USA



SDS-PAGE



Tel: 1-631-559-9269 1-516-512-3133

Email: info@creative-biomart.com Fax: 1-631-938-8127

45-1 Ramsey Road, Shirley, NY 11967, USA