

Recombinant Human NELL1 Protein (Phe22-Asn810), C-Fc tagged

Cat. No. NELL1-4678H Lot. No. (See product label)

SPECIFICATION

Product Overview	Recombinant human NELL1 (Phe22-Asn810) fused with the C-terminal Fc tag was expressed in mammalian cells.
Species	Human
Source	Mammalian Cells
ProteinLength	Phe22-Asn810
Form	Lyophilized powder/frozen liquid
Molecular Mass	115.69 kDa
Purity	>90% as determined by SDS-PAGE.
Notes	For research use only.
Storage	Use a manual defrost freezer and avoid repeated freeze thaw cycles. Store at 2 to 8 centigrade for one week. Store at -20 to -80 centigrade for twelve months from the date of receipt.
Storage Buffer	Lyophilized from PBS, pH 7.4, 1mM EDTA, 4% trehalose, 1% mannitol.
Reconstitution	Reconstitute in sterile water for a stock solution.

 Tel: 1-631-559-9269 1-516-512-3133

 Email: info@creative-biomart.com  Fax: 1-631-938-8127

 45-1 Ramsey Road, Shirley, NY 11967, USA

Shipping They are shipped out with dry ice/blue ice unless customers require otherwise.

GENE INFORMATION

Gene Name NELL1 NEL-like 1 (chicken) [Homo sapiens (human)]

Official Symbol NELL1

Synonyms NELL1; NEL-like 1 (chicken); nel (chicken) like 1; protein kinase C-binding protein NELL1; FLJ45906; IDH3GL; NEL-like protein 1; nel-related protein 1; neural epidermal growth factor-like 1; NRP1;

Gene ID 4745

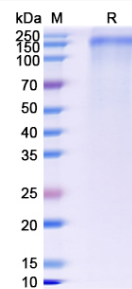
mRNA Refseq NM_006157

Protein Refseq NP_006148

MIM 602319

UniProt ID Q92832

SDS-PAGE



 Tel: 1-631-559-9269 1-516-512-3133

 Email: info@creative-biomart.com  Fax: 1-631-938-8127

 45-1 Ramsey Road, Shirley, NY 11967, USA