

Recombinant Human NELL2 protein, His & T7-tagged

Cat. No. NELL2-1915H Lot. No. (See product label)

SPECIFICATION

Product Overview	Recombinant Human NELL2 aa. (Pro64~Lys331 (Accession # Q99435)) fused with N-terminal His & T7 tag was produced in E. coli cells.
Species	Human
Source	E.coli
ProteinLength	Pro64~Lys331
Description	The protein encoded by this gene is a glycoprotein containing several von Willebrand factor C domains and epidermal growth factor (EGF)-like domains. The encoded protein acts as a homotrimer and is found in the cytoplasm. Several variants encoding a few different isoforms exist, and at least one isoform appears to be a secreted protein. Studies in mouse suggest that this protein plays a role in neural cell growth and differentiation as well as in oncogenesis.
Form	Freeze-dried powder
Molecular Mass	Predicted Molecular Mass: 34.4kDa
Endotoxin	<1.0EU per 1ug (determined by the LAL method)
Purity	>90%
Applications	SDS-PAGE; WB; ELISA; IP.

 Tel: 1-631-559-9269 1-516-512-3133

 Email: info@creative-biomart.com  Fax: 1-631-938-8127

 45-1 Ramsey Road, Shirley, NY 11967, USA

Stability	The thermal stability is described by the loss rate. The loss rate was determined by accelerated thermal degradation test, that is, incubate the protein at 37°C for 48h, and no obvious degradation and precipitation were observed. The loss rate is less than 5% within the expiration date under appropriate storage condition.
Storage	Avoid repeated freeze/thaw cycles. Store at 2-8°C for one month. Aliquot and store at -80°C for 12 months.
Storage buffer	Supplied as lyophilized form in PBS, pH7.4, containing 5% trehalose, 0.01% sarcosyl.
Reconstitution	Reconstitute in sterile PBS, pH7.2-pH7.4.
Isoelectric Point	8.5

GENE INFORMATION

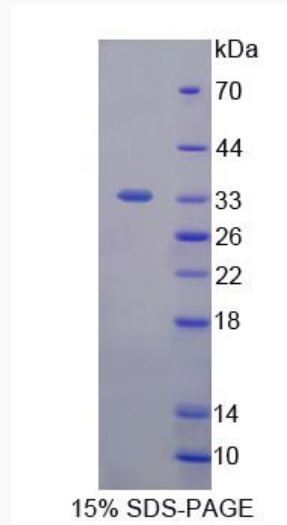
Gene Name	NELL2 neural EGFL like 2 [Homo sapiens (human)]
Official Symbol	NELL2
Synonyms	NELL2; neural EGFL like 2; NRP2; protein kinase C-binding protein NELL2; NEL-like protein 2; NEL-related protein 2; neural epidermal growth factor-like 2
Gene ID	4753
mRNA Refseq	NM_001145107.1
Protein Refseq	NP_001138579.1
UniProt ID	Q99435

 Tel: 1-631-559-9269 1-516-512-3133

 Email: info@creative-biomart.com  Fax: 1-631-938-8127

 45-1 Ramsey Road, Shirley, NY 11967, USA

SDS-PAGE



 Tel: 1-631-559-9269 1-516-512-3133

 Email: info@creative-biomart.com  Fax: 1-631-938-8127

 45-1 Ramsey Road, Shirley, NY 11967, USA