

Recombinant Human NELL2 Protein, Myc/DDK-tagged, C13 and N15-labeled

Cat. No. NELL2-6562H Lot. No. (See product label)

SPECIFICATION

Product Overview

NELL2 MS Standard C13 and N15-labeled recombinant protein (NP_001138582) with a C-terminal MYC/DDK tag, was expressed in HEK293 cells.

Species

Human

Source

HEK293

Description

The protein encoded by this gene is a glycoprotein containing several von Willebrand factor C domains and epidermal growth factor (EGF)-like domains. The encoded protein acts as a homotrimer and is found in the cytoplasm. Several variants encoding a few different isoforms exist, and at least one isoform appears to be a secreted protein. Studies in mouse suggest that this protein plays a role in neural cell growth and differentiation as well as in oncogenesis.

Molecular Mass

94 kDa

AA Sequence

MSIRLLILILKIGRRWTELI RTMESRVLLRTFCLIFGLGAVWGLGVDPSLQIDVLTELE
 LGESTTGVRQVPGLHNGTKAFLFQDTPRSIKASTATAEQFFQKLRNKHEFTILVTLKQ
 THLNSGVILSIHHLDRYLELESSGHRNEVRLHYRSGSHRPHTEVFPYILADDKWHK
 LSLAISASHLILHIDCNKIYERVVEKPSTDLPLGTTFWLGQRNNAHGYFKGIMQDVQLL
 VMPQGFIAQCPDLNRTCPTCNDFHGLVQKIMELQDILAKTSAKLSRAEQRMNRLDQ
 CYCERTCTMKGTTYREFESWIDGCKNCTCLNGTIQCETLICPNPDCPLKSALAYVDG
 KCKECKSICQFQGRTYFEGERN TVYSSSGVVCVLYECKDQTMKLVESGCPALDCP

 Tel: 1-631-559-9269 1-516-512-3133

 Email: info@creative-biomart.com  Fax: 1-631-938-8127

 45-1 Ramsey Road, Shirley, NY 11967, USA

ESHQITLSHSCCKVCKGYDFCSERHNCMENSICRNLNDRAVCS CRDGFALREDNA
 YCEDIDECAEGRHYCRENTMCVNTPGSFMCKTGYIRIDDYSCTEHDECITNQHNC
 DENALCFNTVGGHNCVCKPGYTGNGTTCKAFCKDGCRRNGGACIAANVCACPQGFT
 GPSCETDIDECS DGFVQCDSRANCINLPGWYHCECRDGYHDNGMFSPSGESCEDI
 DECGTGRHSCANDTICFNLDGGYDCRCPHGKNCTGDCIHDGKVKHNGQIWWLEND
 RCSVCSCQNGFVMCRRMVCDCENPTVDLFCCECDPRLSSQCLHQNGETLYNSG
 DTWVQNCQQCRCLQGEVDCWPLPCPDVECEFSILPENECPCRCVTDPCQADTIRN
 DITKTCLDEMNVVRF TGSSWIKHGTECTLCQCKNGHICCSVDPQCLQELTRTRPLEQ
 KLISEEDLAANDILDYKDDDDKV

Purity > 80% as determined by SDS-PAGE and Coomassie blue staining

Stability Stable for 3 months from receipt of products under proper storage and handling conditions.

Storage Store at -80 centigrade. Avoid repeated freeze-thaw cycles.

Concentration 50 µg/mL as determined by BCA

Storage Buffer 100 mM glycine, 25 mM Tris-HCl, pH 7.3.

GENE INFORMATION

Gene Name [NELL2 neural EGFL like 2 \[Homo sapiens \(human\) \]](#)

Official Symbol [NELL2](#)

Synonyms NELL2; NEL-like 2 (chicken); nel (chicken) like 2; protein kinase C-binding protein NELL2; NRP2; NEL-like protein 2; NEL-related protein 2; neural epidermal growth factor-like 2;

 Tel: 1-631-559-9269 1-516-512-3133

 Email: info@creative-biomart.com  Fax: 1-631-938-8127

 45-1 Ramsey Road, Shirley, NY 11967, USA

Gene ID 4753

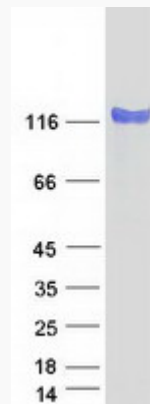
mRNA Refseq NM_001145110

Protein Refseq NP_001138582

MIM 602320

UniProt ID Q99435

SDS-PAGE



Tel: 1-631-559-9269 1-516-512-3133

Email: info@creative-biomart.com Fax: 1-631-938-8127

45-1 Ramsey Road, Shirley, NY 11967, USA