

Recombinant Full Length Human NEO1 Protein, C-Flag-tagged

Cat. No. NEO1-507HFL Lot. No. (See product label)

SPECIFICATION

Product Overview	Recombinant Full Length Human NEO1 Protein, fused to Flag-tag at C-terminus, was expressed in Mammalian cells.
Species	Human
Source	Mammalian Cells
Description	This gene encodes a cell surface protein that is a member of the immunoglobulin superfamily. The encoded protein consists of four N-terminal immunoglobulin-like domains, six fibronectin type III domains, a transmembrane domain and a C-terminal internal domain that shares homology with the tumor suppressor candidate gene DCC. This protein may be involved in cell growth and differentiation and in cell-cell adhesion. Defects in this gene are associated with cell proliferation in certain cancers. Alternate splicing results in multiple transcript variants.
Form	25 mM Tris HCl, pH 7.3, 100 mM glycine, 10% glycerol.
Molecular Mass	156.4 kDa
AA Sequence	<pre> MAAERGARRLLSTPSFWLYCLLLLGRRAPGAAAARSGSAPQSPGASIRTFYFLV EPVDTLVSRGSSV ILNCSAYSESPKIEWKKDGTFLNLVSDDRRQLLPDGSLFISNV VHSKHNPDEGYQCVATVESLGTII SRTAKLIVAGLPRFTSQPEPSSVYAGNNAILN CEVNADLVPFVWRWEQNRQPLLLDDRVIKLP SGMVLVSN ATEGDGGLYRCVVESGGP PKYSDEVELKVLDPDPEVISDLVFLKQPSPLVRVIGQDVVLP CVASGLPTPTI KWMKN EEALDTESSERLVLLAGGSLEISDVTEDDAGTYFCIADNGNETIEAQAELTVQAQPEF </pre>

 Tel: 1-631-559-9269 1-516-512-3133

 Email: info@creative-biomart.com  Fax: 1-631-938-8127

 45-1 Ramsey Road, Shirley, NY 11967, USA

LKQPTNI YAHESMDIVFECEVTGKPTPTVKWVKNNGDMVIPSDYFKIVKEHNLQVLGL
 VKSDEGFYQCIAENDVGNAQ AGAQLIILEHAPATTGPLPSAPRDVVASLVSTRFIKLT
 WRTPASDPHGDNLTYSVFYTKEGIARERVENT SHPGEMQVTIQNLMPATVYIFRVM
 AQNKHSGSESSAPLRVETQPEVQLPGPAPNLRAYAASPTSITVTWE TPVSGNGEIQ
 NYKLYYMEKGTDKQDQDVSSHSYTINGLKKYTEYSFRVVAYNKHGPGVSTPDVAV
 RTLS DVPSAAPQNLSLEVRNSKSIMIHWQPPAPATQNGQITGYKIRYRKASRKSDVT
 ETLVSGTQLSQLIEGLD RGTEYNFRVAALTINGTGPATDWLSAETFESDLDETRVPE
 VPSSLHVRPLVTSIVVSWTPPENQIVVRG YAIGYGIGSPHAQTIKVDYKQRYTTIEN
 LDPSSHYVITLKAFNNVGEIGIPLYESAVTRPHTDTSEVDLFV INAPYTPVPDPTPMMP
 PVGVQASILSHDTIRITWADNSLPKHQKITDSRYTTRWKTNIPANTKYKNANA TTLS
 YLVTGLKPNTLYEFSVMVTKGRRSSTWSMTAHGTTFELVPTSPPKDVTVVSKEGKP
 KTIIVNWQPP SEANGKITGYIIYYSTDVNAEIHWDVIEPVVGNRLTHQIQELTLDPYY
 FKIQARNKSKMGPMSEAVQFR TPKADSSDKMPNDQASGSGGKGSRLPDLGSDYK
 PPMGNSNSPHGSPTSPLDSNMLLVIIISVGVITIVVV VIIAVFCTRRTTSHQKKKRAAC
 KSVNGSHKYKGNKSKDVKPPDLWIHHERLELKPIDKSPDPNPIMTDTPI PRNSQDITP
 VDNSMDSNIHQRRNSYRGHESEDSMSTLAGRRGMRPKMMMPFDSQPPQPVISAH
 PIHSLDN PHHHFHSSSLASPARSHLYHPGSPWPIGTSMLSLSDRANSTESVRNTPST
 DTMPASSSQTCCDHDQDEGA TSSSYLASSQEEDSGQSLPTAHVRPSHPLKSFVAV
 PAIPPPGPPTYDPALPSTPLLSQQALNHHIHSVKTA
 SIGTLGRSRPPMPVVVPSAPEVQETTRMLEDSSESYEPDELTKEMAHLEGLMKDLN
 AITTATRTRPLEQKLISEEDLAANDILDYKDDDDKV

Purity	> 80% as determined by SDS-PAGE and Coomassie blue staining.
Stability	Stable for 12 months from the date of receipt of the product under proper storage and handling conditions. Avoid repeated freeze-thaw cycles.
Storage	Store at -80 centigrade.
Concentration	>50 ug/mL as determined by microplate BCA method.

 Tel: 1-631-559-9269 1-516-512-3133

 Email: info@creative-biomart.com  Fax: 1-631-938-8127

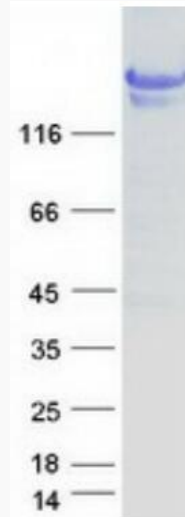
 45-1 Ramsey Road, Shirley, NY 11967, USA

Preparation	Recombinant protein was captured through anti-DDK affinity column followed by conventional chromatography steps.
Protein Families	Druggable Genome, Transmembrane
Protein Pathways	Cell adhesion molecules (CAMs)
Full Length	Full L.
GENE INFORMATION	
Gene Name	NEO1 neogenin 1 [Homo sapiens (human)]
Official Symbol	NEO1
Synonyms	NGN; IGDC2; NTN1R2
Gene ID	4756
mRNA Refseq	NM_002499.4
Protein Refseq	NP_002490.2
MIM	601907
UniProt ID	Q92859

 Tel: 1-631-559-9269 1-516-512-3133

 Email: info@creative-biomart.com  Fax: 1-631-938-8127

 45-1 Ramsey Road, Shirley, NY 11967, USA



Coomassie blue staining of purified NEO1 protein.

 Tel: 1-631-559-9269 1-516-512-3133

 Email: info@creative-biomart.com  Fax: 1-631-938-8127

 45-1 Ramsey Road, Shirley, NY 11967, USA