

Recombinant Human NES Protein (1321-1569 aa), His-tagged

Cat. No. NES-1473H Lot. No. (See product label)

SPECIFICATION

Product Overview	Recombinant Human NES Protein (1321-1569 aa) is produced by Yeast expression system. This protein is fused with a 6xHis tag at the N-terminal. Research Area: Neuroscience. Protein Description: Partial.
Species	Human
Source	Yeast
ProteinLength	1321-1569 aa
Description	Required for brain and eye development. Promotes the disassembly of phosphorylated vimentin intermediate filaments (IF) during mitosis and may play a role in the trafficking and distribution of IF proteins and other cellular factors to daughter cells during progenitor cell division. Required for survival, renewal and mitogen-stimulated proliferation of neural progenitor cells.
Form	Tris-based buffer, 50% glycerol
Molecular Mass	27.8 kDa
AA Sequence	<pre> PPPQGETGKEGWDPVLAASEGLEAPPSEKEEGEEGEEECGRDSDLSEEFEDLGTE APFLPGVPGVEVAEPLGQVPQLLLDPAAWDRDGEDSDGFADEEESGEEGEEDQEEGR EPGAGRWGPSSVGLSLQALSSSQRGEFLESVSVSVPWDDSLRGAVAGAPKTAL ETESQDSAEPGSEEEESDPVSLEREDKVPGLPEIPSGMEDAGPGADIIGVNGQGPN LEGKSQHVNGGVMNGLEQSEEVGQGMPL </pre>

 Tel: 1-631-559-9269 1-516-512-3133

 Email: info@creative-biomart.com  Fax: 1-631-938-8127

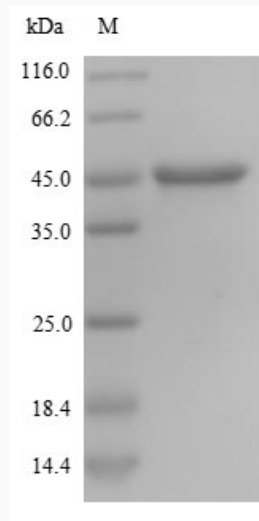
 45-1 Ramsey Road, Shirley, NY 11967, USA

Purity	> 90% as determined by SDS-PAGE.
Notes	Repeated freezing and thawing is not recommended. Store working aliquots at 4 centigrade for up to one week.
Storage	The shelf life is related to many factors, storage state, buffer ingredients, storage temperature and the stability of the protein itself. Generally, the shelf life of liquid form is 6 months at -20 centigrade/-80 centigrade. The shelf life of lyophilized form is 12 months at -20 centigrade/-80 centigrade.
Concentration	A hardcopy of COA with reconstitution instruction is sent along with the products.
GENE INFORMATION	
Gene Name	NES nestin [Homo sapiens]
Official Symbol	NES
Synonyms	NES; nestin; FLJ21841; Nbla00170;
Gene ID	10763
mRNA Refseq	NM_006617
Protein Refseq	NP_006608
MIM	600915
UniProt ID	P48681

 Tel: 1-631-559-9269 1-516-512-3133

 Email: info@creative-biomart.com  Fax: 1-631-938-8127

 45-1 Ramsey Road, Shirley, NY 11967, USA



(Tris-Glycine gel) Discontinuous SDS-PAGE (reduced) with 5% enrichment gel and 15% separation gel.

 Tel: 1-631-559-9269 1-516-512-3133

 Email: info@creative-biomart.com  Fax: 1-631-938-8127

 45-1 Ramsey Road, Shirley, NY 11967, USA