

# Active Recombinant Full Length Human NEU1 Protein, C-Flag-tagged

Cat. No. NEU1-178HFL Lot. No. (See product label)

## SPECIFICATION

|                         |   |
|-------------------------|---|
| <b>Product Overview</b> | Recombinant Full Length Human NEU1 Protein, fused to Flag-tag at C-terminus, was expressed in Mammalian cells.  |
| <b>Species</b>          | Human   |
| <b>Source</b>           | Mammalian Cells   |
| <b>Description</b>      | The protein encoded by this gene is a lysosomal enzyme that cleaves terminal sialic acid residues from substrates such as glycoproteins and glycolipids. In the lysosome, this enzyme is part of a heterotrimeric complex together with beta-galactosidase and cathepsin A (the latter is also referred to as 'protective protein'). Mutations in this gene can lead to sialidosis, a lysosomal storage disease that can be type 1 (cherry red spot-myoclonus syndrome or normosomatic type), which is late-onset, or type 2 (the dysmorphic type), which occurs at an earlier age with increased severity. |
| <b>Form</b>             | 25 mM Tris HCl, pH 7.3, 100 mM glycine, 10% glycerol.   |
| <b>Bio-activity</b>     | Cell treatment  |
| <b>Molecular Mass</b>   | 40.2 kDa  |
| <b>AA Sequence</b>      | MTGERPSTALPDRRWGPRILGFWGGCRVWVFAAIFLLLSLAASWSKAENDFGLVQP<br>LVTMEQLLWVSGRQ IGSVDTRIFRILITATPRGTLAFAEARKMSSSDEGAKFIARRS<br>MDQGSTWSPTAFIVNDGDVDPGLNLG AVVSDVETGVVFLFYSLCAHKAGCQVAST  |

 Tel: 1-631-559-9269 1-516-512-3133

 Email: [info@creative-biomart.com](mailto:info@creative-biomart.com)  Fax: 1-631-938-8127

 45-1 Ramsey Road, Shirley, NY 11967, USA

MLVWSKDDGVSWSTPRNLSLDIGTEVFAPGPGSGIQKQREP RKGRLIVCGHGTLE  
 RDGVFCLLSDDHGASWRYGSGVSGIPYGQPKQENDFNPDECQPYELPDGSSVINA  
 R NQNNYHCHCRIVLRSYDACDTRLRPRDVTDFPELVDPVVAAGAVVTSSGIVFFSNP  
 AHPEFRVNLTLRWSF SNGTSWRKETVQLWPGPSGYSSLATLEGSMDGEEQAPQL  
 YVLYEKGRNHYTESISVAKISVYGTLTRTRPLEQKLISEEDLAANDILDYKDDDDKV

**Purity** > 80% as determined by SDS-PAGE and Coomassie blue staining.

**Stability** Stable for 12 months from the date of receipt of the product under proper storage and handling conditions. Avoid repeated freeze-thaw cycles.

**Storage** Store at -80 centigrade.

**Concentration** >50 ug/mL as determined by microplate BCA method.

**Preparation** Recombinant protein was captured through anti-DDK affinity column followed by conventional chromatography steps.

**Protein Families** Druggable Genome, Transmembrane

**Protein Pathways** Lysosome, Other glycan degradation, Sphingolipid metabolism

**Full Length** Full L.

## GENE INFORMATION

**Gene Name** NEU1 neuraminidase 1 [ Homo sapiens (human) ]

**Official Symbol** NEU1

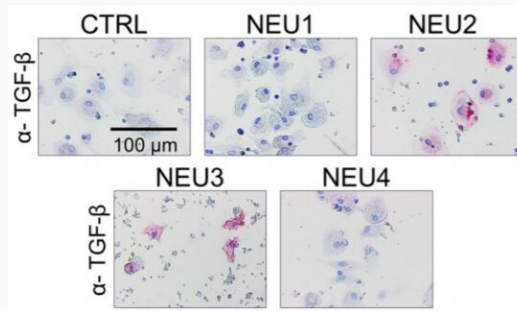
**Synonyms** NEU; NANH; SIAL1

 Tel: 1-631-559-9269 1-516-512-3133

 Email: [info@creative-biomart.com](mailto:info@creative-biomart.com)  Fax: 1-631-938-8127

 45-1 Ramsey Road, Shirley, NY 11967, USA

|                       |             |
|-----------------------|-------------|
| <b>Gene ID</b>        | 4758        |
| <b>mRNA Refseq</b>    | NM_000434.4 |
| <b>Protein Refseq</b> | NP_000425.1 |
| <b>MIM</b>            | 608272      |
| <b>UniProt ID</b>     | Q99519      |

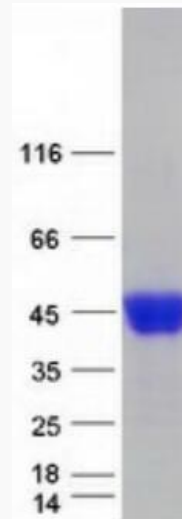


NEU2 and NEU3 upregulate TGF-beta1 by PBMC. Human PBMC were incubated with or without recombinant human sialidases, NEU1, NEU2, NEU3, NEU4 for five days, then air-dried and stained for TGF-beta1. Positive staining appears pink, and counterstaining is blue.

 Tel: 1-631-559-9269 1-516-512-3133

 Email: [info@creative-biomart.com](mailto:info@creative-biomart.com)  Fax: 1-631-938-8127

 45-1 Ramsey Road, Shirley, NY 11967, USA



Coomassie blue staining of purified NEU1 protein.

 Tel: 1-631-559-9269 1-516-512-3133

 Email: [info@creative-biomart.com](mailto:info@creative-biomart.com)  Fax: 1-631-938-8127

 45-1 Ramsey Road, Shirley, NY 11967, USA