

Recombinant Human NEU1 Protein (Glu48-Leu415), C-His tagged

Cat. No. NEU1-4684H Lot. No. (See product label)

SPECIFICATION

Product Overview	Recombinant human NEU1 (Glu48-Leu415) fused with the C-His tag was expressed in Mammalian cells.
Species	Human
Source	Mammalian Cells
ProteinLength	Glu48-Leu415
Form	Lyophilized powder/frozen liquid
Molecular Mass	42.82KD
Purity	>90% as determined by SDS-PAGE.
Notes	For research use only.
Storage	Use a manual defrost freezer and avoid repeated freeze thaw cycles. Store at 2 to 8 centigrade for one week. Store at -20 to -80 centigrade for twelve months from the date of receipt.
Storage Buffer	Supplied as solution form in PBS, pH 7.4 or lyophilized from PBS, pH 7.4.
Reconstitution	Reconstitute in sterile water for a stock solution.

 Tel: 1-631-559-9269 1-516-512-3133

 Email: info@creative-biomart.com  Fax: 1-631-938-8127

 45-1 Ramsey Road, Shirley, NY 11967, USA

Shipping They are shipped out with dry ice/blue ice unless customers require otherwise.

GENE INFORMATION

Gene Name NEU1 sialidase 1 (lysosomal sialidase) [Homo sapiens (human)]

Official Symbol NEU1

Synonyms NEU1; sialidase 1 (lysosomal sialidase); NEU; sialidase-1; G9 sialidase; exo-alpha-sialidase; lysosomal sialidase; acetylneuraminyl hydrolase; N-acetyl-alpha-neuraminidase 1; NANH; SIAL1; FLJ93471;

Gene ID 4758

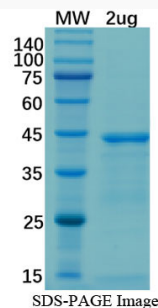
mRNA Refseq NM_000434

Protein Refseq NP_000425

MIM 608272

UniProt ID Q99519

SDS-PAGE



 Tel: 1-631-559-9269 1-516-512-3133

 Email: info@creative-biomart.com  Fax: 1-631-938-8127

 45-1 Ramsey Road, Shirley, NY 11967, USA