

# Recombinant Human NEU1 Protein, Myc/DDK-tagged, C13 and N15-labeled

**Cat. No.** NEU1-5667H    **Lot. No.** (See product label)

## SPECIFICATION

<b>Product Overview</b>	NEU1 MS Standard C13 and N15-labeled recombinant protein (NP_000425) with a C-terminal MYC/DDK tag, was expressed in HEK293 cells.
<b>Species</b>	Human
<b>Source</b>	HEK293
<b>Description</b>	The protein encoded by this gene is a lysosomal enzyme that cleaves terminal sialic acid residues from substrates such as glycoproteins and glycolipids. In the lysosome, this enzyme is part of a heterotrimeric complex together with beta-galactosidase and cathepsin A (the latter is also referred to as 'protective protein'). Mutations in this gene can lead to sialidosis, a lysosomal storage disease that can be type 1 (cherry red spot-myoclonus syndrome or normosomatic type), which is late-onset, or type 2 (the dysmorphic type), which occurs at an earlier age with increased severity.
<b>Molecular Mass</b>	45.5 kDa
<b>AA Sequence</b>	MTGERPSTALPDRRWGPRILGFWGGCRVWVFAAIFLLLSLAASWSKAENDFGLVQP LVTMEQLLWVSGRQIGSVDTFRITLITATPRGTLAFAEARKMSSSDEGAKFIALRRS MDQGSTWSPTAFIVNDGDVDPDGLNLGAVVSDVETGVVFLFYSLCAHKAGCQVAST MLVWSKDDGVSWSWTPRNLSLDIGTEVFAPGPGSGIQKQREPRKGRILVCGHGTLE DGVFCLLSDDHGASWRYGSGVSGIPYGQPKQENDFNPDECQPYELPDGSSVINAR NQNNYHCHCRIVLRSYDACDTRLRPRDVTDFPELVDPVVAAGAVVTSSGIVFFSNPAH

 Tel: 1-631-559-9269    1-516-512-3133

 Email: [info@creative-biomart.com](mailto:info@creative-biomart.com)     Fax: 1-631-938-8127

 45-1 Ramsey Road, Shirley, NY 11967, USA

PEFRVNLTLRWSFSNGTSWRKETVQLWPGPSGYSSLATLEGSMDGEEQAPQLYVL  
YEKGRNHYTESSIVAKISVYGTLTRTRPLEQKLISEEDLAANDILDYKDDDDKV

**Purity** > 80% as determined by SDS-PAGE and Coomassie blue staining

**Stability** Stable for 3 months from receipt of products under proper storage and handling conditions.

**Storage** Store at -80 centigrade. Avoid repeated freeze-thaw cycles.

**Concentration** 50 µg/mL as determined by BCA

**Storage Buffer** 100 mM glycine, 25 mM Tris-HCl, pH 7.3.

## GENE INFORMATION

**Gene Name** NEU1 neuraminidase 1 [ Homo sapiens (human) ]

**Official Symbol** NEU1

**Synonyms** NEU1; sialidase 1 (lysosomal sialidase); NEU; sialidase-1; G9 sialidase; exo-alpha-sialidase; lysosomal sialidase; acetylneuraminyl hydrolase; N-acetyl-alpha-neuraminidase 1; NANH; SIAL1; FLJ93471;

**Gene ID** 4758

**mRNA Refseq** NM\_000434

**Protein Refseq** NP\_000425

**MIM** 608272

 Tel: 1-631-559-9269 1-516-512-3133

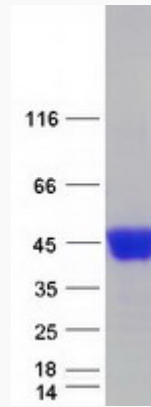
 Email: [info@creative-biomart.com](mailto:info@creative-biomart.com)  Fax: 1-631-938-8127

 45-1 Ramsey Road, Shirley, NY 11967, USA

UniProt ID

Q99519

SDS-PAGE



 Tel: 1-631-559-9269 1-516-512-3133

 Email: [info@creative-biomart.com](mailto:info@creative-biomart.com)  Fax: 1-631-938-8127

 45-1 Ramsey Road, Shirley, NY 11967, USA