

Recombinant Full Length Human NEUROD1 Protein, C-Flag-tagged

Cat. No. NEUROD1-389HFL Lot. No. (See product label)

SPECIFICATION

Product Overview	Recombinant Full Length Human NEUROD1 Protein, fused to Flag-tag at C-terminus, was expressed in Mammalian cells.
Species	Human
Source	Mammalian Cells
Description	This gene encodes a member of the NeuroD family of basic helix-loop-helix (bHLH) transcription factors. The protein forms heterodimers with other bHLH proteins and activates transcription of genes that contain a specific DNA sequence known as the E-box. It regulates expression of the insulin gene, and mutations in this gene result in type II diabetes mellitus.
Form	25 mM Tris HCl, pH 7.3, 100 mM glycine, 10% glycerol.
Molecular Mass	39.7 kDa
AA Sequence	MTKSYSESGLMGEPQPQGGPPSWTDECLSSQDEEHEADKKEDDLEAMNAEEDSLR NGGEEDEDEDELEEEE EEEEEDDDDQPKRRGPKKKKMTKARLERFKLRRMKANA RERNRMHGLNAALDNLKVVPCYSKTQKLSKI ETLRLAKNYIWALSEILRSGKSPDL VSFVQTLCKGLSQPTTNLVAGCLQLNPRFTLPEQNQDMPPHLPTA SASFPVHPYSY QSPGLPSPPYGTMDSSHVFHVKPPPHAYSAALEPFFESPLTDCTSPSFDGPLSPPL SIN GNFSFKHEPSAEFEKNYAFTMHYPAATLAGAQSHGSIFSGTAAPRCEIPIDNIMS FDSHSHHERVMSAQL

 Tel: 1-631-559-9269 1-516-512-3133

 Email: info@creative-biomart.com  Fax: 1-631-938-8127

 45-1 Ramsey Road, Shirley, NY 11967, USA

NAIFHDTRTRPLEQKLISEEDLAANDILDYKDDDDKV

Purity > 80% as determined by SDS-PAGE and Coomassie blue staining.

Stability Stable for 12 months from the date of receipt of the product under proper storage and handling conditions. Avoid repeated freeze-thaw cycles.

Storage Store at -80 centigrade.

Concentration >50 ug/mL as determined by microplate BCA method.

Preparation Recombinant protein was captured through anti-DDK affinity column followed by conventional chromatography steps.

Protein Families Adult stem cells, Druggable Genome, Embryonic stem cells, ES Cell Differentiation/IPS, Transcription Factors

Protein Pathways Maturity onset diabetes of the young

Full Length Full L.

GENE INFORMATION

Gene Name NEUROD1 neuronal differentiation 1 [Homo sapiens (human)]

Official Symbol NEUROD1

Synonyms T2D; BETA2; BHF-1; MODY6; NEUROD; bHLHa3

Gene ID 4760

 Tel: 1-631-559-9269 1-516-512-3133

 Email: info@creative-biomart.com  Fax: 1-631-938-8127

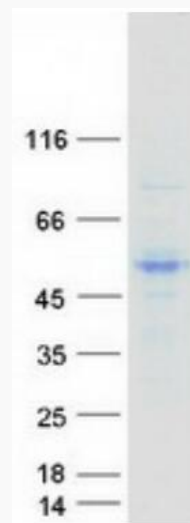
 45-1 Ramsey Road, Shirley, NY 11967, USA

mRNA Refseq [NM_002500.5](#)

Protein Refseq [NP_002491.3](#)

MIM [601724](#)

UniProt ID [Q13562](#)



Coomassie blue staining of purified NEUROD1 protein.

 Tel: 1-631-559-9269 1-516-512-3133

 Email: info@creative-biomart.com  Fax: 1-631-938-8127

 45-1 Ramsey Road, Shirley, NY 11967, USA