

Recombinant Human NF1 protein(1566-1837aa), His&Myc-tagged

Cat. No. NF1-2983H **Lot. No.** (See product label)

SPECIFICATION

Product Overview	Recombinant Human NF1 protein(P21359)(1566-1837aa), fused with N-terminal His and C-terminal Myc tag, was expressed in E. coli.
Species	Human
Source	E.coli
ProteinLength	1566-1837aa
Form	If the delivery form is liquid, the default storage buffer is Tris/PBS-based buffer, 5%-50% glycerol. If the delivery form is lyophilized powder, the buffer before lyophilization is Tris/PBS-based buffer, 6% Trehalose, pH 8.0.
Molecular Mass	38.7 kDa
Purity	Greater than 85% as determined by SDS-PAGE.
Storage	Store at -20°C/-80°C upon receipt, aliquoting is necessary for mutiple use. Avoid repeated freeze-thaw cycles.
Reconstitution	We recommend that this vial be briefly centrifuged prior to opening to bring the contents to the bottom. Please reconstitute protein in deionized sterile water to a concentration of 0.1-1.0 mg/mL. We recommend to add 5-50% of glycerol (final concentration) and aliquot for long-term storage at -20°C/-80°C.

 Tel: 1-631-559-9269 1-516-512-3133

 Email: info@creative-biomart.com  Fax: 1-631-938-8127

 45-1 Ramsey Road, Shirley, NY 11967, USA

AA Sequence

SSKFEEFMTRHQVHEKEEFKALKTLSIFYQAGTSKAGNPIFYVARRFKTGQINGDLL
 IYHVLLTLKPYAKPYEIVVDLTHTGPSNRFKTDFLSKWFVVFPGFAYDNVSAVYIYN
 CNSWVREYTKYHERLLTGLKGSKRLVFIDCPGKLAEHIEHEQQKLPAAATLAEEDLK
 VFHNALKLAHKDTKVSIKVGSTAVQVTSAERTKVLGQSVFLNDIYYASEIEEICLVDEN
 QFTLTIANQGTPLTFMHQECEAIVQSIIHIRTRWELSQPD

GENE INFORMATION

Gene Name [NF1 neurofibromin 1 \[Homo sapiens \]](#)

Official Symbol [NF1](#)

Synonyms NF1; neurofibromin 1; neurofibromin; neurofibromatosis; von Recklinghausen disease; Watson disease; neurofibromatosis-related protein NF-1; WSS; NFNS; VRNF; FLJ21220; DKFZp686J1293;

Gene ID [4763](#)

mRNA Refseq [NM_000267](#)

Protein Refseq [NP_000258](#)

MIM [613113](#)

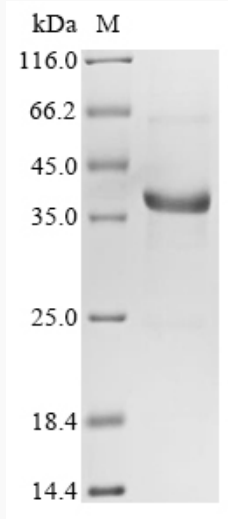
UniProt ID [P21359](#)

 Tel: 1-631-559-9269 1-516-512-3133

 Email: info@creative-biomart.com  Fax: 1-631-938-8127

 45-1 Ramsey Road, Shirley, NY 11967, USA

SDS-PAGE



 Tel: 1-631-559-9269 1-516-512-3133

 Email: info@creative-biomart.com  Fax: 1-631-938-8127

 45-1 Ramsey Road, Shirley, NY 11967, USA