

Recombinant Human NF2 protein, GST-tagged

Cat. No. NF2-22H Lot. No. (See product label)

SPECIFICATION

Product Overview	Recombinant Human NF2(1 a.a. - 82 a.a.) fused with GST tag at N-terminal was expressed in Wheat Germ.
Species	Human
Source	Wheat Germ
ProteinLength	1-82 a.a.
Description	This gene encodes a protein that is similar to some members of the ERM (ezrin, radixin, moesin) family of proteins that are thought to link cytoskeletal components with proteins in the cell membrane. This gene product has been shown to interact with cell-surface proteins, proteins involved in cytoskeletal dynamics and proteins involved in regulating ion transport. This gene is expressed at high levels during embryonic development; in adults, significant expression is found in Schwann cells, meningeal cells, lens and nerve. Mutations in this gene are associated with neurofibromatosis type II which is characterized by nervous system and skin tumors and ocular abnormalities. Two predominant isoforms and a number of minor isoforms are produced by alternatively spliced transcripts.
Form	50 mM Tris-HCl, 10 mM reduced Glutathione, pH=8.0 in the elution buffer.
Molecular Mass	34.76 kDa
AA Sequence	MVSLRALLLALRQKPHSTGTIHEVTAQLMMSVRLSFWPVAVCSCVAQMASFILIKA

 Tel: 1-631-559-9269 1-516-512-3133

 Email: info@creative-biomart.com  Fax: 1-631-938-8127

 45-1 Ramsey Road, Shirley, NY 11967, USA

PPQPQQSPQPVLSTLLFMYLPGPAR

Applications

Enzyme-linked Immunoabsorbent Assay; Western Blot (Recombinant protein); Antibody Production; Protein Array

Notes

Best use within three months from the date of receipt of this protein.

Storage

Store at -80 centigrade. Aliquot to avoid repeated freezing and thawing.

GENE INFORMATION

Gene Name

NF2 neurofibromin 2 (merlin) [Homo sapiens]

Official Symbol

NF2

Synonyms

NF2; neurofibromin 2 (merlin); neurofibromin 2 (bilateral acoustic neuroma); merlin; moesin ezrin radixin like; schwannomin; schwannomerlin; neurofibromin-2; moesin-ezrin-radixin like; moesin-ezrin-radixin-like protein; moesin-ezrin-radixin-like protein; ACN; SCH; BANF;

Gene ID

4771

mRNA Refseq

NM_000268

Protein Refseq

NP_000259

MIM

607379

UniProt ID

P35240

Chromosome Location

22q12.2

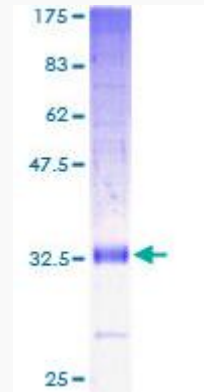
 Tel: 1-631-559-9269 1-516-512-3133

 Email: info@creative-biomart.com  Fax: 1-631-938-8127

 45-1 Ramsey Road, Shirley, NY 11967, USA

Pathway ErbB2/ErbB3 signaling events, organism-specific biosystem;

Function cytoskeletal protein binding; protein binding;



 Tel: 1-631-559-9269 1-516-512-3133

 Email: info@creative-biomart.com  Fax: 1-631-938-8127

 45-1 Ramsey Road, Shirley, NY 11967, USA