

Recombinant Human NFASC Protein, GST-tagged

Cat. No. NFASC-596H Lot. No. (See product label)

SPECIFICATION

Product Overview	Recombinant Human NFASC(661 a.a. - 758 a.a.) fused with GST tag at the N-terminus was produced in Wheat Germ.
Species	Human
Source	Wheat Germ
ProteinLength	661 a.a. - 758 a.a.
Description	This gene encodes an L1 family immunoglobulin cell adhesion molecule with multiple IGcam and fibronectin domains. The protein functions in neurite outgrowth, neurite fasciculation, and organization of the axon initial segment (AIS) and nodes of Ranvier on axons during early development. Both the AIS and nodes of Ranvier contain high densities of voltage-gated Na ⁺ (Nav) channels which are clustered by interactions with cytoskeletal and scaffolding proteins including this protein, gliomedin, ankyrin 3 (ankyrin-G), and betaIV spectrin. This protein links the AIS extracellular matrix to the intracellular cytoskeleton. This gene undergoes extensive alternative splicing, and the full-length nature of some variants has not been determined.
Form	50 mM Tris-HCl, 10 mM reduced Glutathione, pH=8.0 in the elution buffer.
Molecular Mass	36.52 kDa
AA sequence	KDDEPLYIGNRMKKEDDSLTFVGVAERDQGSYTCVASTELDQDLAKAYLTVLADQAT PTNRLAALPKGRPDRPRDLELTDLAERSVRLTWIPGDANNS

 Tel: 1-631-559-9269 1-516-512-3133

 Email: info@creative-biomart.com  Fax: 1-631-938-8127

 45-1 Ramsey Road, Shirley, NY 11967, USA

Applications	Enzyme-linked Immunoabsorbent Assay; Western Blot (Recombinant protein); Antibody Production; Protein Array
Notes	Best use within three months from the date of receipt of this protein.
Storage	Store at -80 centigrade. Aliquot to avoid repeated freezing and thawing.

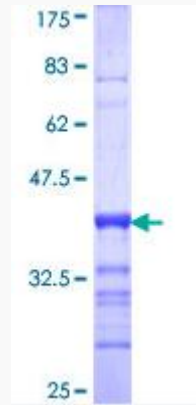
GENE INFORMATION

Gene Name	NFASC neurofascin [Homo sapiens]
Official Symbol	NFASC
Synonyms	NFASC; neurofascin; neurofascin homolog (chicken); FLJ46866; KIAA0756; NF; NRCAML; neurofascin homolog; DKFZp686P2250;
Gene ID	23114
mRNA Refseq	NM_001005388
Protein Refseq	NP_001005388
MIM	609145
UniProt ID	O94856

 Tel: 1-631-559-9269 1-516-512-3133

 Email: info@creative-biomart.com  Fax: 1-631-938-8127

 45-1 Ramsey Road, Shirley, NY 11967, USA



 Tel: 1-631-559-9269 1-516-512-3133

 Email: info@creative-biomart.com  Fax: 1-631-938-8127

 45-1 Ramsey Road, Shirley, NY 11967, USA