

Recombinant Mouse NFE2L2 protein, His-tagged

Cat. No. NFE2L2-125M Lot. No. (See product label)

SPECIFICATION

Product Overview	Recombinant Mouse NFE2L2 protein is produced by E.coli expression system and the residues Ala375-Asn597 is expressed with a His tag at the N-terminal.
Species	Mouse
Source	E.coli
ProteinLength	Ala375-Asn597
Form	100 mM NaHCO ₃ , 500 mM NaCl, pH 8.3, containing 1 mM EDTA, 1 mM DTT, 0.01 % SKL, 5 % Trehalose and Proclin 300.
Molecular Mass	34 kDa
AA Sequence	APGSVKQNGPKAQPAHSPGDTVQPLSPAQGHSA PMRESQCEN TT KKEVPVSPGH QKAPFTKDKHSSRLEAHLTRDELRAKALHIPFPVEKIINLPVDDFNEMMSKEQFNEAQ LALIRDIRRRGKKNVAAQNCRKRKLENIVELEQDLGHLKDEREKLLREKGENDRNLH LLKRRLSTLYLEVFSMLRDEDGKPYSPSEYSLQQTRDGNVFLVPKSKKPDTKKN
Endotoxin	Less than 1.0 EU per ug by the LAL method.
Purity	> 95 %
Applications	Positive Control; Immunogen; SDS-PAGE; WB.

 Tel: 1-631-559-9269 1-516-512-3133

 Email: info@creative-biomart.com  Fax: 1-631-938-8127

 45-1 Ramsey Road, Shirley, NY 11967, USA

Stability	The thermal stability is described by the loss rate. The loss rate was determined by accelerated thermal degradation test, that is, incubate the protein at 37 centigrade for 48 h, and no obvious degradation and precipitation were observed. The loss rate is less than 5 % within the expiration date under appropriate storage condition.
Storage	Avoid repeated freeze/thaw cycles. Store at 2-8 centigrade for one month. Aliquot and store at -80 centigrade for 12 months.
Storage Buffer	100 mM NaHCO ₃ , 500 mM NaCl, pH 8.3, containing 1 mM EDTA, 1 mM DTT, 0.01 % SKL, 5 % Trehalose and Proclin 300.
Reconstitution	Reconstitute in 100 mM NaHCO ₃ , 500 mM NaCl (pH 8.3) to a concentration of 0.1-1.0 mg/mL. Do not vortex.

GENE INFORMATION

Gene Name	NFE2L2 nuclear factor (erythroid-derived 2)-like 2 [Homo sapiens]
Official Symbol	NFE2L2
Synonyms	NRF2; HEBP1; NF-E2-Related Factor 2; Nuclear factor, erythroid derived 2, like 2
Gene ID	4780
mRNA Refseq	NM_001145412
Protein Refseq	NP_001138884
MIM	600492
UniProt ID	Q16236

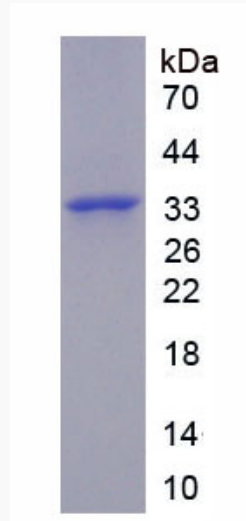
 Tel: 1-631-559-9269 1-516-512-3133

 Email: info@creative-biomart.com  Fax: 1-631-938-8127

 45-1 Ramsey Road, Shirley, NY 11967, USA



NFE2L2-125M, 1



Tel: 1-631-559-9269 1-516-512-3133

Email: info@creative-biomart.com Fax: 1-631-938-8127

45-1 Ramsey Road, Shirley, NY 11967, USA