

Recombinant Human NFE2L2 protein, His & GST-tagged

Cat. No. NFE2L2-1917H Lot. No. (See product label)

SPECIFICATION

Product Overview	Recombinant Human NFE2L2 aa. (Ser400~Lys603 (Accession # Q16236)) fused with N-terminal His & GST tag was produced in E. coli cells.
Species	Human
Source	E.coli
ProteinLength	Ser400~Lys603
Description	This gene encodes a transcription factor which is a member of a small family of basic leucine zipper (bZIP) proteins. The encoded transcription factor regulates genes which contain antioxidant response elements (ARE) in their promoters; many of these genes encode proteins involved in response to injury and inflammation which includes the production of free radicals. Multiple transcript variants encoding different isoforms have been characterized for this gene.
Form	Freeze-dried powder
Molecular Mass	Predicted Molecular Mass: 53.5kDa
Endotoxin	<1.0EU per 1ug (determined by the LAL method)
Purity	>95%
Applications	SDS-PAGE; WB; ELISA; IP.

 Tel: 1-631-559-9269 1-516-512-3133

 Email: info@creative-biomart.com  Fax: 1-631-938-8127

 45-1 Ramsey Road, Shirley, NY 11967, USA

Stability	The thermal stability is described by the loss rate. The loss rate was determined by accelerated thermal degradation test, that is, incubate the protein at 37°C for 48h, and no obvious degradation and precipitation were observed. The loss rate is less than 5% within the expiration date under appropriate storage condition.
Storage	Avoid repeated freeze/thaw cycles. Store at 2-8°C for one month. Aliquot and store at -80°C for 12 months.
Storage buffer	Supplied as lyophilized form in 20mM Tris, 150mM NaCl, pH8.0, containing 1mM EDTA, 1mM DTT, 0.01% sarcosyl, 5% trehalose, and preservative.
Reconstitution	Reconstitute in sterile ddH ₂ O.
Isoelectric Point	8.7

GENE INFORMATION

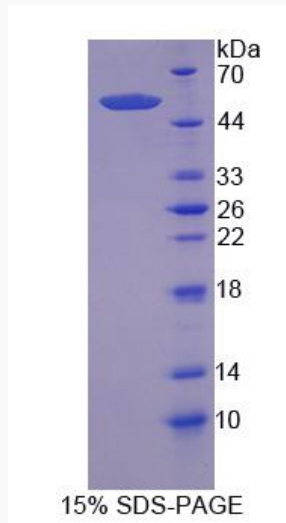
Gene Name	NFE2L2 nuclear factor, erythroid 2 like 2 [Homo sapiens (human)]
Official Symbol	NFE2L2
Synonyms	NFE2L2; nuclear factor, erythroid 2 like 2; NRF2; HEBP1; nuclear factor erythroid 2-related factor 2; nuclear factor erythroid-derived 2-like 2
Gene ID	4780
mRNA Refseq	NM_001145412.3
Protein Refseq	NP_001138884.1
UniProt ID	Q16236

 Tel: 1-631-559-9269 1-516-512-3133

 Email: info@creative-biomart.com  Fax: 1-631-938-8127

 45-1 Ramsey Road, Shirley, NY 11967, USA

SDS-PAGE



 Tel: 1-631-559-9269 1-516-512-3133

 Email: info@creative-biomart.com  Fax: 1-631-938-8127

 45-1 Ramsey Road, Shirley, NY 11967, USA