

# Recombinant Human NFE2L2 Protein, Myc/DDK-tagged, C13 and N15-labeled

**Cat. No.** NFE2L2-4685H    **Lot. No.** (See product label)

## SPECIFICATION

### Product Overview

NFE2L2 MS Standard C13 and N15-labeled recombinant protein (NP\_006155) with a C-terminal MYC/DDK tag, was expressed in HEK293 cells.

### Species

Human

### Source

HEK293

### Description

This gene encodes a transcription factor which is a member of a small family of basic leucine zipper (bZIP) proteins. The encoded transcription factor regulates genes which contain antioxidant response elements (ARE) in their promoters; many of these genes encode proteins involved in response to injury and inflammation which includes the production of free radicals. Multiple transcript variants encoding different isoforms have been characterized for this gene.

### Molecular Mass

67.8 kDa

### AA Sequence

MMDLELPPPGLPSQQDMDLIDILWRQDIDLGVSREVFDFSQRRKEYELEKQKKLEKE  
RQEQLQKEQEKAFFAQLQLDEETGEFLPIQPAQHIQSETSGSANYSQVAHIPKSDAL  
YFDDCMQLLAQTFFVDDNEVSSATFQSLVPDIPGHIESPVFIATNQAQSPETSVAQ  
VAPVDLDGMQQDIEQVWEELLSIPELQCLNIENDKLVETTMVPSPEAKLTEVDNYHF  
YSSIPSMEKEVGNCSPHFLNAFEDSFSSILSTEDPNQLTVNSLNSDATVNTDFGDEF  
YSAFIAEPSISNSMPSPATLSHSLSELLNGPIDVSDLSLCKAFNQNHPESTAEFNDS  
SGISLNTSPSVASPEHSVESSYGD TLLGLSDSEVEELDSAPGSVKQNGPKTPVHSS

 Tel: 1-631-559-9269    1-516-512-3133

 Email: [info@creative-biomart.com](mailto:info@creative-biomart.com)     Fax: 1-631-938-8127

 45-1 Ramsey Road, Shirley, NY 11967, USA

GDMVQPLSPSQGQSTHVHDAQCENTPEKELPVSPGHRKTPFTKDKHSSRLEAHLT  
 RDELRAKALHIPFPVEKIINLPVDFNEMMSKEQFNEAQLALIRDIRRRGKNKVA AQN  
 CRKRKLENIVELEQDL DHLKDEKEKLLKEKGENDKSLHLLKKQLSTLYLEVFSMLRDE  
 DGKPYPSPSEYSLQQTRDGNVFLVPKSKKPDVKKNTRTRPLEQKLISEEDLAANDILD  
 YKDDDDKV

**Purity** > 80% as determined by SDS-PAGE and Coomassie blue staining

**Stability** Stable for 3 months from receipt of products under proper storage and handling conditions.

**Storage** Store at -80 centigrade. Avoid repeated freeze-thaw cycles.

**Concentration** 50 µg/mL as determined by BCA

**Storage Buffer** 100 mM glycine, 25 mM Tris-HCl, pH 7.3.

## GENE INFORMATION

**Gene Name** NFE2L2 nuclear factor, erythroid 2 like 2 [ Homo sapiens (human) ]

**Official Symbol** NFE2L2

**Synonyms** NFE2L2; nuclear factor (erythroid-derived 2)-like 2; nuclear factor erythroid 2-related factor 2; NF E2 related factor 2; NRF2; HEBP1; NFE2-related factor 2; NF-E2-related factor 2; nuclear factor erythroid-derived 2-like 2; nuclear factor, erythroid derived 2, like 2;

**Gene ID** 4780

**mRNA Refseq** NM\_006164

 Tel: 1-631-559-9269 1-516-512-3133

 Email: [info@creative-biomart.com](mailto:info@creative-biomart.com)  Fax: 1-631-938-8127

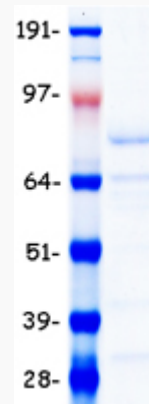
 45-1 Ramsey Road, Shirley, NY 11967, USA

**Protein Refseq** NP\_006155

**MIM** 600492

**UniProt ID** Q16236

**SDS-PAGE**



 Tel: 1-631-559-9269 1-516-512-3133

 Email: [info@creative-biomart.com](mailto:info@creative-biomart.com)  Fax: 1-631-938-8127

 45-1 Ramsey Road, Shirley, NY 11967, USA