

Recombinant Human NFE2L2 Protein (Met17-Asn605), N-His tagged

Cat. No. NFE2L2-4688H Lot. No. (See product label)

SPECIFICATION

Product Overview	Recombinant human NFE2L2 (Met17-Asn605) fused with the N-His tag was expressed in E. coli.
Species	Human
Source	E.coli
ProteinLength	Met17-Asn605
Form	Lyophilized powder/frozen liquid
Molecular Mass	68.39 kDa
Purity	>90% as determined by SDS-PAGE.
Notes	For research use only.
Storage	Use a manual defrost freezer and avoid repeated freeze thaw cycles. Store at 2 to 8 centigrade for one week. Store at -20 to -80 centigrade for twelve months from the date of receipt.
Storage Buffer	0.01M PBS, pH 7.4, 0.02% NLS
Reconstitution	Reconstitute in sterile water for a stock solution.

 Tel: 1-631-559-9269 1-516-512-3133

 Email: info@creative-biomart.com  Fax: 1-631-938-8127

 45-1 Ramsey Road, Shirley, NY 11967, USA

Shipping They are shipped out with dry ice/blue ice unless customers require otherwise.

GENE INFORMATION

Gene Name NFE2L2 nuclear factor (erythroid-derived 2) -like 2 [Homo sapiens (human)]

Official Symbol NFE2L2

Synonyms NFE2L2; nuclear factor (erythroid-derived 2) -like 2; nuclear factor erythroid 2-related factor 2; NF E2 related factor 2; NRF2; HEBP1; NFE2-related factor 2; NF-E2-related factor 2; nuclear factor erythroid-derived 2-like 2; nuclear factor, erythroid derived 2, like 2;

Gene ID 4780

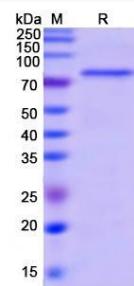
mRNA Refseq NM_001145412

Protein Refseq NP_001138884

MIM 600492

UniProt ID Q16236

SDS-PAGE



 Tel: 1-631-559-9269 1-516-512-3133

 Email: info@creative-biomart.com  Fax: 1-631-938-8127

 45-1 Ramsey Road, Shirley, NY 11967, USA