

Recombinant Full Length Human NFE2L2 Protein, N-His-tagged

Cat. No. NFE2L2-48HFL **Lot. No.** (See product label)

SPECIFICATION

Product Overview	Recombinant Full Length Human NFE2L2 Protein, fused to His-tag at N-terminus, was expressed in E. coli.
Species	Human
Source	E.coli
Description	This gene encodes a transcription factor which is a member of a small family of basic leucine zipper (bZIP) proteins. The encoded transcription factor regulates genes which contain antioxidant response elements (ARE) in their promoters; many of these genes encode proteins involved in response to injury and inflammation which includes the production of free radicals. Multiple transcript variants encoding different isoforms have been characterized for this gene.
Form	50mM Tris, 8M Urea, pH8.0.
Molecular Mass	67.6 kDa
AA Sequence	A DNA sequence encoding human full-length NFE2L2.
Purity	> 80% as determined by SDS-PAGE and Coomassie blue staining.
Stability	Stable for 12 months from the date of receipt of the product under proper storage and handling conditions. Avoid repeated freeze-thaw cycles.

 Tel: 1-631-559-9269 1-516-512-3133

 Email: info@creative-biomart.com  Fax: 1-631-938-8127

 45-1 Ramsey Road, Shirley, NY 11967, USA

Storage	Store at -80 centigrade.
Concentration	>50 ug/mL as determined by microplate BCA method.
Full Length	Full L.

GENE INFORMATION

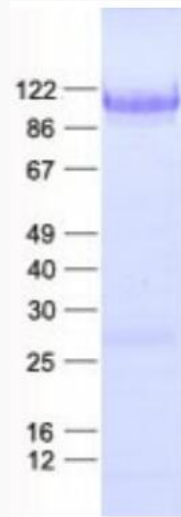
Gene Name	NFE2L2 NFE2 like bZIP transcription factor 2 [Homo sapiens (human)]
Official Symbol	NFE2L2
Synonyms	NRF2; HEBP1; Nrf-2; IMDDHH
Gene ID	4780
mRNA Refseq	NM_006164.5
Protein Refseq	NP_006155.2
MIM	600492
UniProt ID	Q16236

 Tel: 1-631-559-9269 1-516-512-3133

 Email: info@creative-biomart.com  Fax: 1-631-938-8127

 45-1 Ramsey Road, Shirley, NY 11967, USA

SDS-PAGE



 Tel: 1-631-559-9269 1-516-512-3133

 Email: info@creative-biomart.com  Fax: 1-631-938-8127

 45-1 Ramsey Road, Shirley, NY 11967, USA