

Recombinant Human NFE2L2 protein(256-605aa), His-tagged

Cat. No. NFE2L2-5928H Lot. No. (See product label)

SPECIFICATION

Product Overview	Recombinant Human NFE2L2 protein(Q16236)(256-605aa), fused with N-terminal His tag, was expressed in E. coli.
Species	Human
Source	E.coli
ProteinLength	256-605aa
Form	If the delivery form is liquid, the default storage buffer is Tris/PBS-based buffer, 5%-50% glycerol. If the delivery form is lyophilized powder, the buffer before lyophilization is Tris/PBS-based buffer, 6% Trehalose, pH 8.0.
Molecular Mass	42.9 kDa
Purity	Greater than 85% as determined by SDS-PAGE.
Storage	Store at -20°C/-80°C upon receipt, aliquoting is necessary for mutiple use. Avoid repeated freeze-thaw cycles.
Reconstitution	We recommend that this vial be briefly centrifuged prior to opening to bring the contents to the bottom. Please reconstitute protein in deionized sterile water to a concentration of 0.1-1.0 mg/mL. We recommend to add 5-50% of glycerol (final concentration) and aliquot for long-term storage at -20°C/-80°C.

 Tel: 1-631-559-9269 1-516-512-3133

 Email: info@creative-biomart.com  Fax: 1-631-938-8127

 45-1 Ramsey Road, Shirley, NY 11967, USA

AA Sequence

SILSTEDPNQLTVNSLNSDATVNTDFGDEFYSAFIAEPSISNSMPSPATLSHSLSELLN
 GPIDVSDLSLCKAFNQNHPESTAEFNDSDSGISLNTSPSVASPEHSVSSSYGDTLL
 GLSDSEVEELDSAPGSVKQNGPKTPVHSSGDMVQPLSPSQGQSTHVHDAQCENTP
 EKELPVSPGHRKTPFTKDKHSSRLEAHLTRDELRAKALHIPFPVEKIINLPVDFNEM
 MSKEQFNEAQLALIRDIRRRGKNKVAQAQNCRKRKLENIVELEQDLHLKDEKEKLLK
 EKGENDKSLHLLKKQLSTLYLEVFSMLRDEDEGKPYSPSEYSLQQTRDGNVFLVPKS
 KKPDVKKN

GENE INFORMATION

Gene Name

[NFE2L2 nuclear factor \(erythroid-derived 2\)-like 2 \[Homo sapiens \]](#)

Official Symbol

[NFE2L2](#)

Synonyms

NFE2L2; nuclear factor (erythroid-derived 2)-like 2; nuclear factor erythroid 2-related factor 2; NF E2 related factor 2; NRF2; HEBP1; NFE2-related factor 2; NF-E2-related factor 2; nuclear factor erythroid-derived 2-like 2; nuclear factor, erythroid derived 2, like 2;

Gene ID

[4780](#)

mRNA Refseq

[NM_001145412](#)

Protein Refseq

[NP_001138884](#)

MIM

[600492](#)

UniProt ID

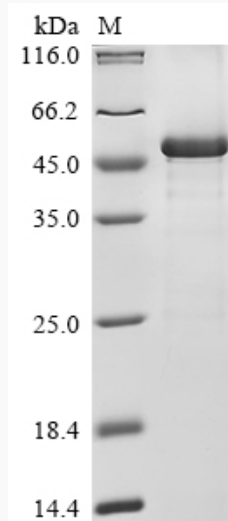
[Q16236](#)

 Tel: 1-631-559-9269 1-516-512-3133

 Email: info@creative-biomart.com  Fax: 1-631-938-8127

 45-1 Ramsey Road, Shirley, NY 11967, USA

SDS-PAGE



 Tel: 1-631-559-9269 1-516-512-3133

 Email: info@creative-biomart.com  Fax: 1-631-938-8127

 45-1 Ramsey Road, Shirley, NY 11967, USA