

Recombinant Human NFKB1 protein, GST-tagged

Cat. No. NFKB1-5260H Lot. No. (See product label)

SPECIFICATION

Product Overview	Recombinant Human NFKB1 protein(P19838)(1-968aa), fused to N-terminal GST tag, was expressed in E. coli.
Species	Human
Source	E.coli
ProteinLength	1-968aa
Form	If the delivery form is liquid, the default storage buffer is Tris/PBS-based buffer, 5%-50% glycerol. If the delivery form is lyophilized powder, the buffer before lyophilization is Tris/PBS-based buffer, 6% Trehalose, pH 8.0.
Molecular Mass	132.4 kDa
Purity	Greater than 90% as determined by SDS-PAGE.
Storage	Store at -20°C/-80°C upon receipt, aliquoting is necessary for multiple use. Avoid repeated freeze-thaw cycles.
Reconstitution	Please reconstitute protein in deionized sterile water to a concentration of 0.1-1.0 mg/mL. We recommend to add 5-50% of glycerol (final concentration) and aliquot for long-term storage at -20°C/-80°C. Our default final concentration of glycerol is 50%.

 Tel: 1-631-559-9269 1-516-512-3133

 Email: info@creative-biomart.com  Fax: 1-631-938-8127

 45-1 Ramsey Road, Shirley, NY 11967, USA

GENE INFORMATION

Gene Name NFKB1 nuclear factor of kappa light polypeptide gene enhancer in B-cells 1 [Homo sapiens]

Official Symbol NFKB1

Synonyms NFKB1; nuclear factor of kappa light polypeptide gene enhancer in B-cells 1; nuclear factor NF-kappa-B p105 subunit; KBF1; NF kappaB; NF kB1; NFkappaB; NFKB p50; p50; p105; NF-kappabeta; DNA binding factor KBF1; DNA-binding factor KBF1; nuclear factor NF-kappa-B p50 subunit; nuclear factor kappa-B DNA binding subunit; EBP-1; NF-kB1; NFKB-p50; NF-kappaB; NFKB-p105; NF-kappa-B; MGC54151; DKFZp686C01211;

Gene ID 4790

mRNA Refseq NM_001165412

Protein Refseq NP_001158884

MIM 164011

UniProt ID P19838

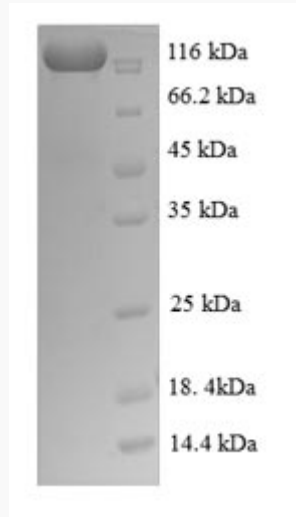
 Tel: 1-631-559-9269 1-516-512-3133

 Email: info@creative-biomart.com  Fax: 1-631-938-8127

 45-1 Ramsey Road, Shirley, NY 11967, USA



SDS-PAGE



Tel: 1-631-559-9269 1-516-512-3133

Email: info@creative-biomart.com Fax: 1-631-938-8127

45-1 Ramsey Road, Shirley, NY 11967, USA