

## Recombinant Human NFKB2 Protein (Pro38-Leu343), N-His tagged

Cat. No. NFKB2-4692H Lot. No. (See product label)

### SPECIFICATION

<b>Product Overview</b>	Recombinant human NFKB2 (Pro38-Leu343) fused with the N-His tag was expressed in E. coli.
<b>Species</b>	Human
<b>Source</b>	E.coli
<b>ProteinLength</b>	Pro38-Leu343
<b>Form</b>	Lyophilized powder/frozen liquid
<b>Molecular Mass</b>	36.95 kDa
<b>Purity</b>	>90% as determined by SDS-PAGE.
<b>Notes</b>	For research use only.
<b>Storage</b>	Use a manual defrost freezer and avoid repeated freeze thaw cycles. Store at 2 to 8 centigrade for one week. Store at -20 to -80 centigrade for twelve months from the date of receipt.
<b>Storage Buffer</b>	0.01M PBS, pH 7.4, 0.02% NLS
<b>Reconstitution</b>	Reconstitute in sterile water for a stock solution.

 Tel: 1-631-559-9269 1-516-512-3133

 Email: [info@creative-biomart.com](mailto:info@creative-biomart.com)  Fax: 1-631-938-8127

 45-1 Ramsey Road, Shirley, NY 11967, USA

**Shipping** They are shipped out with dry ice/blue ice unless customers require otherwise.

## GENE INFORMATION

<b>Gene Name</b>	NFKB2 nuclear factor of kappa light polypeptide gene enhancer in B-cells 2 (p49/p100) [ Homo sapiens (human) ]
<b>Official Symbol</b>	NFKB2
<b>Synonyms</b>	NFKB2; nuclear factor of kappa light polypeptide gene enhancer in B-cells 2 (p49/p100); nuclear factor NF-kappa-B p100 subunit; LYT 10; NF kB2; p52; p105; oncogene Lyt-10; DNA-binding factor KBF2; lymphocyte translocation chromosome 10 protein; nuclear factor of kappa light chain gene enhancer in B-cells 2; H2TF1; LYT10; LYT-10; NF-kB2;
<b>Gene ID</b>	4791
<b>mRNA Refseq</b>	NM_001077493
<b>Protein Refseq</b>	NP_001070961
<b>MIM</b>	164012
<b>UniProt ID</b>	Q00653

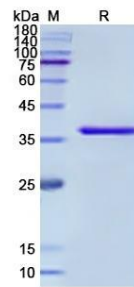
 Tel: 1-631-559-9269 1-516-512-3133

 Email: [info@creative-biomart.com](mailto:info@creative-biomart.com)  Fax: 1-631-938-8127

 45-1 Ramsey Road, Shirley, NY 11967, USA



SDS-PAGE



Tel: 1-631-559-9269 1-516-512-3133

Email: [info@creative-biomart.com](mailto:info@creative-biomart.com) Fax: 1-631-938-8127

45-1 Ramsey Road, Shirley, NY 11967, USA