

## Active Recombinant Human NFKBIA protein

Cat. No. NFKBIA-2581H Lot. No. (See product label)

### SPECIFICATION

<b>Product Overview</b>	Recombinant Human I $\kappa$ B-alpha/NFKBIA Protein is produced by E. coli expression system. The target protein is expressed with sequence (Phe2-Leu317) of human I $\kappa$ B-alpha (Accession #NP_065390.1).
<b>Species</b>	Human
<b>Source</b>	E.coli
<b>ProteinLength</b>	Phe2-Leu317
<b>Form</b>	Lyophilized from a 0.22 $\mu$ m filtered solution of PBS, pH 7.4.
<b>Bio-activity</b>	Measured by its binding ability in a functional ELISA. Immobilized Human I $\kappa$ B-alpha Protein at 2 $\mu$ g/mL (100 $\mu$ L/well) can bind I $\kappa$ B $\alpha$ Rabbit mAb with a linear range of 0.195-0.64 ng/mL.
<b>Molecular Mass</b>	38 kDa
<b>Endotoxin</b>	< 1.0 EU/ $\mu$ g of the protein by LAL method.
<b>Purity</b>	> 90% by SDS-PAGE.
<b>Storage</b>	Store the lyophilized protein at -20°C to -80 °C for long term. After reconstitution, the protein solution is stable at -20 °C for 3 months, at 2-8 °C for up to 1 week.

 Tel: 1-631-559-9269 1-516-512-3133

 Email: [info@creative-biomart.com](mailto:info@creative-biomart.com)  Fax: 1-631-938-8127

 45-1 Ramsey Road, Shirley, NY 11967, USA

**Reconstitution** Reconstitute to a concentration of 0.1-0.5 mg/mL in sterile distilled water.

## GENE INFORMATION

**Gene Name** NFKBIA nuclear factor of kappa light polypeptide gene enhancer in B-cells inhibitor, alpha [ Homo sapiens ]

**Official Symbol** NFKBIA

**Synonyms** NFKBIA; nuclear factor of kappa light polypeptide gene enhancer in B-cells inhibitor, alpha; NFKBI; NF-kappa-B inhibitor alpha; IkappaBalph; IKBA; MAD 3; ikB-alpha; I-kappa-B-alpha; nuclear factor of kappa light chain gene enhancer in B-cells; major histocompatibility complex enhancer-binding protein MAD3; MAD-3;

**Gene ID** 4792

**mRNA Refseq** NM\_020529

**Protein Refseq** NP\_065390

**MIM** 164008

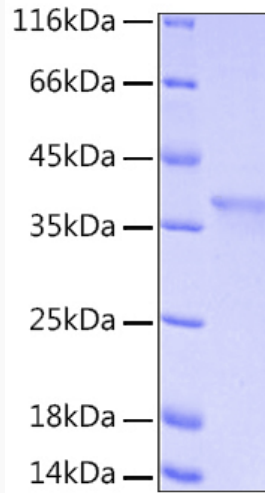
**UniProt ID** P25963

 Tel: 1-631-559-9269 1-516-512-3133

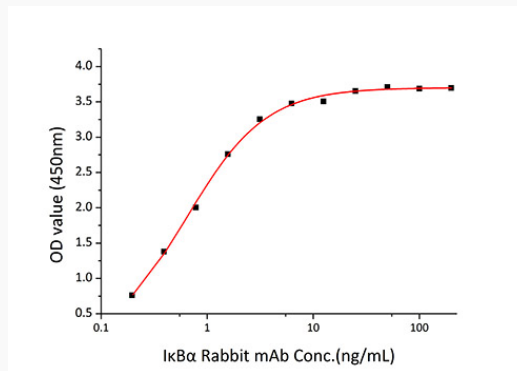
 Email: [info@creative-biomart.com](mailto:info@creative-biomart.com)  Fax: 1-631-938-8127

 45-1 Ramsey Road, Shirley, NY 11967, USA

**SDS-PAGE**



**Bio-activity**



 Tel: 1-631-559-9269 1-516-512-3133

 Email: [info@creative-biomart.com](mailto:info@creative-biomart.com)  Fax: 1-631-938-8127

 45-1 Ramsey Road, Shirley, NY 11967, USA