

## Recombinant Human NGF Protein

**Cat. No.** NGF-145H    **Lot. No.** (See product label)

### SPECIFICATION

|                         |   |
|-------------------------|---|
| <b>Product Overview</b> | Recombinant Human pro-Nerve Growth Factor is produced by our E.coli expression system and the target gene encoding Glu19-Ala241 is expressed.   |
| <b>Species</b>          | Human   |
| <b>Source</b>           | E.coli  |
| <b>ProteinLength</b>    | Glu19-Ala241  |
| <b>Description</b>      | The precursor form of the nerve growth factor (proNGF) like its mature form is characterized by the cystin knot motif consisting of three cystine bridges, whereas proneurotrophins and mature neurotrophins elicit opposite biological effects. ProNGF functions preferentially via the complex of pan-neurotrophin receptor p75 (p75NTR) and vps10p domain-containing receptor sortilin inducing neuronal apoptosis and contributing to age- and disease-related neurodegeneration. |
| <b>Form</b>             | Lyophilized from a 0.2 um filtered solution of 20mM PB, 250mM NaCl, pH 7.2.   |
| <b>AA Sequence</b>      | MEPHSESNVPAGHTIPQAHWTKLQHSLDTALRRARSAPAAAIAARVAGQTRNITVDP<br>RLFKKRRLRS PRVLFSTQPPREAADT QDLDFEVGGAAPFNRTHRSKRSSHPIFHR<br>GEFSVCDSVSVWVGDKTTATDIKGKEVMVLGEVNIN NSVFKQYFFETKCRDPN PV<br>DSGCRGIDSKHWNSYCTTTHTFVKALTM DGKQAAWRFIRIDTACVCLSRKAVRRA   |
| <b>Endotoxin</b>        | Less than 0.1 ng/ug (1 EU/ug).  |

 Tel: 1-631-559-9269    1-516-512-3133

 Email: [info@creative-biomart.com](mailto:info@creative-biomart.com)     Fax: 1-631-938-8127

 45-1 Ramsey Road, Shirley, NY 11967, USA

|                          |  |
|--------------------------|--|
| <b>Purity</b>            | >95%   |
| <b>Storage</b>           | <p>Lyophilized protein should be stored at &lt; -20 centigrade, though stable at room temperature for 3 weeks.</p> <p>Reconstituted protein solution can be stored at 4-7 centigrade for 2-7 days.</p> <p>Aliquots of reconstituted samples are stable at &lt; -20 centigrade for 3 months.</p>                    |
| <b>Reconstitution</b>    | <p>Always centrifuge tubes before opening. Do not mix by vortex or pipetting.</p> <p>It is not recommended to reconstitute to a concentration less than 100µg/ml.</p> <p>Dissolve the lyophilized protein in distilled water.</p> <p>Please aliquot the reconstituted solution to minimize freeze-thaw cycles.</p> |
| <b>Quality Statement</b> | Purity: Greater than 95% as determined by reducing SDS-PAGE.   |
| <b>Shipping</b>          | <p>The product is shipped at ambient temperature.</p> <p>Upon receipt, store it immediately at the temperature listed below.</p>   |

## GENE INFORMATION

|                        |  |
|------------------------|--|
| <b>Gene Name</b>       | NGF nerve growth factor [ Homo sapiens (human) ] |
| <b>Official Symbol</b> | NGF  |
| <b>Synonyms</b>        | Beta-Nerve Growth Factor; Beta-NGF; NGFB; HSAN5  |
| <b>Gene ID</b>         | 4803   |
| <b>mRNA Refseq</b>     | NM_002506.3                                      |
| <b>Protein Refseq</b>  | NP_002497.2                                      |

 Tel: 1-631-559-9269 1-516-512-3133

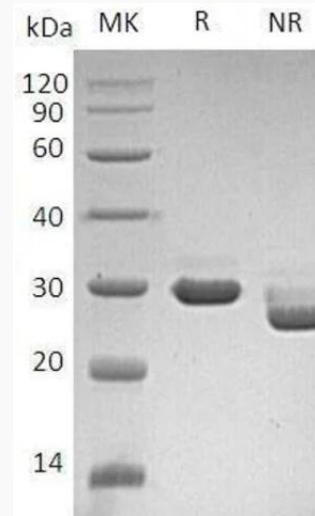
 Email: [info@creative-biomart.com](mailto:info@creative-biomart.com)  Fax: 1-631-938-8127

 45-1 Ramsey Road, Shirley, NY 11967, USA

**MIM** 162030

**UniProt ID** P01138

**SDS-PAGE**



 Tel: 1-631-559-9269 1-516-512-3133

 Email: [info@creative-biomart.com](mailto:info@creative-biomart.com)  Fax: 1-631-938-8127

 45-1 Ramsey Road, Shirley, NY 11967, USA