

Recombinant Human NGF protein, His&Myc-tagged

Cat. No. NGF-6444H Lot. No. (See product label)

SPECIFICATION

| | |
|-------------------------|--|
| Product Overview | Recombinant Human NGF protein(P01138)(122-241aa), fused with N-terminal His tag and C-terminal Myc tag, was expressed in E.coli. |
| Species | Human |
| Source | E.coli |
| ProteinLength | 122-241aa |
| Form | If the delivery form is liquid, the default storage buffer is Tris/PBS-based buffer, 5%-50% glycerol. If the delivery form is lyophilized powder, the buffer before lyophilization is Tris/PBS-based buffer, 6% Trehalose, pH 8.0. |
| Molecular Mass | 20.9 kDa |
| Purity | Greater than 90% as determined by SDS-PAGE. |
| Storage | Store at -20°C/-80°C upon receipt, aliquoting is necessary for mutiple use. Avoid repeated freeze-thaw cycles. |
| Reconstitution | We recommend that this vial be briefly centrifuged prior to opening to bring the contents to the bottom. Please reconstitute protein in deionized sterile water to a concentration of 0.1-1.0 mg/mL. We recommend to add 5-50% of glycerol (final concentration) and aliquot for long-term storage at -20°C/-80°C. |

 Tel: 1-631-559-9269 1-516-512-3133

 Email: info@creative-biomart.com  Fax: 1-631-938-8127

 45-1 Ramsey Road, Shirley, NY 11967, USA

AA Sequence SSSHPIFHRGEFSVCDSVSVWVGDKTTATDIKGKEVMVLGEVNINNSVFKQYFFETK
CRDPNPVDSGCRGIDSKHWNSYCTTTHTFVKALTMDSGKQAAWRFFIRIDTACVCVLS
RKAVRRA

GENE INFORMATION

Gene Name NGF nerve growth factor (beta polypeptide) [Homo sapiens]

Official Symbol NGF

Synonyms NGF; nerve growth factor (beta polypeptide); NGFB; beta-nerve growth factor; nerve growth factor, beta subunit; HSN5; Beta-NGF; MGC161426; MGC161428;

Gene ID 4803

mRNA Refseq NM_002506

Protein Refseq NP_002497

MIM 162030

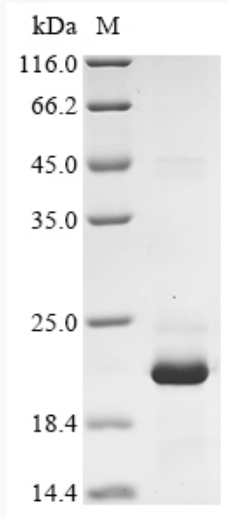
UniProt ID P01138

 Tel: 1-631-559-9269 1-516-512-3133

 Email: info@creative-biomart.com  Fax: 1-631-938-8127

 45-1 Ramsey Road, Shirley, NY 11967, USA

SDS-PAGE



 Tel: 1-631-559-9269 1-516-512-3133

 Email: info@creative-biomart.com  Fax: 1-631-938-8127

 45-1 Ramsey Road, Shirley, NY 11967, USA