

## Recombinant Human NGFR Protein (Met1-Asn250), C-His tagged

Cat. No. NGFR-4704H Lot. No. (See product label)

### SPECIFICATION

<b>Product Overview</b>	Recombinant human NGFR (Met1-Asn250) fused with the C-terminal His tag was expressed in Mammalian cells.
<b>Species</b>	Human
<b>Source</b>	Mammalian Cells
<b>ProteinLength</b>	Met1-Asn250
<b>Form</b>	Lyophilized powder/frozen liquid
<b>Molecular Mass</b>	27.5 kDa
<b>Endotoxin</b>	< 1.0 EU/μg of the protein as determined by the LAL method.
<b>Purity</b>	>90% as determined by SDS-PAGE.
<b>Notes</b>	For research use only.
<b>Storage</b>	Use a manual defrost freezer and avoid repeated freeze thaw cycles. Store at 2 to 8 centigrade for one week. Store at -20 to -80 centigrade for twelve months from the date of receipt.
<b>Storage Buffer</b>	Supplied as solution form in PBS or lyophilized from PBS.

 Tel: 1-631-559-9269 1-516-512-3133

 Email: [info@creative-biomart.com](mailto:info@creative-biomart.com)  Fax: 1-631-938-8127

 45-1 Ramsey Road, Shirley, NY 11967, USA

**Reconstitution** Reconstitute in sterile water for a stock solution.

**Shipping** They are shipped out with dry ice/blue ice unless customers require otherwise.

## GENE INFORMATION

**Gene Name** [NGFR nerve growth factor receptor \[ Homo sapiens \(human\) \]](#)

**Official Symbol** [NGFR](#)

**Synonyms**

NGFR; nerve growth factor receptor; nerve growth factor receptor (TNFR superfamily, member 16); tumor necrosis factor receptor superfamily member 16; CD271; low affinity nerve growth factor receptor; p75NTR; TNFR superfamily, member 16; TNFRSF16; p75 ICD; NGF receptor; TNFR superfamily, member 16; low affinity neurotrophin receptor p75NTR; low-affinity nerve growth factor receptor; p75 (NTR); Gp80-LNGFR;

**Gene ID** [4804](#)

**mRNA Refseq** [NM\\_002507](#)

**Protein Refseq** [NP\\_002498](#)

**MIM** [162010](#)

**UniProt ID** [P08138](#)

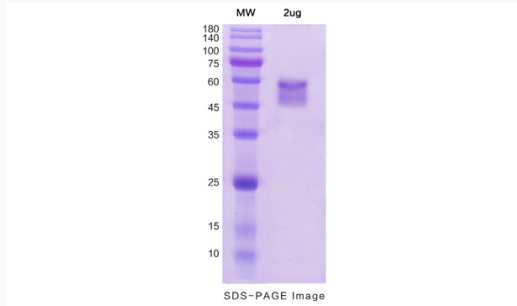
 Tel: 1-631-559-9269 1-516-512-3133

 Email: [info@creative-biomart.com](mailto:info@creative-biomart.com)  Fax: 1-631-938-8127

 45-1 Ramsey Road, Shirley, NY 11967, USA



## SDS-PAGE



Tel: 1-631-559-9269 1-516-512-3133

Email: [info@creative-biomart.com](mailto:info@creative-biomart.com) Fax: 1-631-938-8127

45-1 Ramsey Road, Shirley, NY 11967, USA