

Recombinant Human NHLH1 Protein, Myc/DDK-tagged, C13 and N15-labeled

Cat. No. NHLH1-2430H Lot. No. (See product label)

SPECIFICATION

Product Overview	NHLH1 MS Standard C13 and N15-labeled recombinant protein (NP_005589) with a C-terminal MYC/DDK tag, was expressed in HEK293 cells.
Species	Human
Source	HEK293
Description	The helix-loop-helix (HLH) proteins are a family of putative transcription factors, some of which have been shown to play an important role in growth and development of a wide variety of tissues and species. Four members of this family have been clearly implicated in tumorigenesis via their involvement in chromosomal translocations in lymphoid tumors: MYC, LYL1, E2A, and SCL.
Molecular Mass	14.6 kDa
AA Sequence	MMLNSDTMELDLPPTHSETESGFSDCGGGAGPDGAGPGGPGGGQARGPEPEGEP GRKDLQHLSREERRRRRRATAKYRTAHATRERIRVEAFNLAFaelRkLLPTLPPDKK LSKIEILRLAICYISYLNHVLDVTRTRPLEQKLISEEDLAANDILDYKDDDDKV
Purity	> 80% as determined by SDS-PAGE and Coomassie blue staining
Stability	Stable for 3 months from receipt of products under proper storage and handling conditions.

 Tel: 1-631-559-9269 1-516-512-3133

 Email: info@creative-biomart.com  Fax: 1-631-938-8127

 45-1 Ramsey Road, Shirley, NY 11967, USA

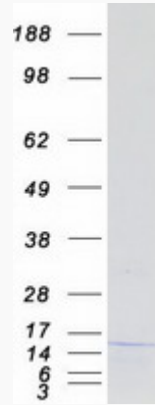
Storage	Store at -80 centigrade. Avoid repeated freeze-thaw cycles.
Concentration	50 µg/mL as determined by BCA
Storage Buffer	100 mM glycine, 25 mM Tris-HCl, pH 7.3.
GENE INFORMATION	
Gene Name	NHLH1 nescient helix loop helix 1 [Homo sapiens (human)]
Official Symbol	NHLH1
Synonyms	NHLH1; nescient helix loop helix 1; HEN1; helix-loop-helix protein 1; bHLHa35; NSCL; NSCL1; HEN-1; NSCL-1; class A basic helix-loop-helix protein 35;
Gene ID	4807
mRNA Refseq	NM_005598
Protein Refseq	NP_005589
MIM	162360
UniProt ID	Q02575

 Tel: 1-631-559-9269 1-516-512-3133

 Email: info@creative-biomart.com  Fax: 1-631-938-8127

 45-1 Ramsey Road, Shirley, NY 11967, USA

SDS-PAGE



 Tel: 1-631-559-9269 1-516-512-3133

 Email: info@creative-biomart.com  Fax: 1-631-938-8127

 45-1 Ramsey Road, Shirley, NY 11967, USA