

Recombinant Human NHP2L1 protein, His-tagged

Cat. No. NHP2L1-5483H Lot. No. (See product label)

SPECIFICATION

Product Overview	Recombinant Human NHP2L1 protein(P55769)(2-128aa), fused to N-terminal His tag, was expressed in Yeast.
Species	Human
Source	Yeast
ProteinLength	2-128aa
Form	If the delivery form is liquid, the default storage buffer is Tris/PBS-based buffer, 5%-50% glycerol. If the delivery form is lyophilized powder, the buffer before lyophilization is Tris/PBS-based buffer, 6% Trehalose, pH 8.0.
Molecular Mass	16 kDa
Purity	Greater than 90% as determined by SDS-PAGE.
Storage	Store at -20°C/-80°C upon receipt, aliquoting is necessary for mutiple use. Avoid repeated freeze-thaw cycles.
Reconstitution	Please reconstitute protein in deionized sterile water to a concentration of 0.1-1.0 mg/mL. We recommend to add 5-50% of glycerol (final concentration) and aliquot for long-term storage at -20°C/-80°C. Our default final concentration of glycerol is 50%.

GENE INFORMATION

 Tel: 1-631-559-9269 1-516-512-3133

 Email: info@creative-biomart.com  Fax: 1-631-938-8127

 45-1 Ramsey Road, Shirley, NY 11967, USA

Gene Name	NHP2L1 NHP2 non-histone chromosome protein 2-like 1 (<i>S. cerevisiae</i>) [<i>Homo sapiens</i>]
Official Symbol	NHP2L1
Synonyms	NHP2L1; NHP2 non-histone chromosome protein 2-like 1 (<i>S. cerevisiae</i>); non histone chromosome protein 2 (<i>S. cerevisiae</i>) like 1 , sperm specific antigen 1 , SSFA1; NHP2-like protein 1; 15.5K; FA 1; small nuclear ribonucleoprotein 15.5kDa (U4/U6.U5); SNRNP15 5; SNU13; SPAG12; sperm specific antigen 1; U4/U6.U5 tri-snRNP 15.5 kDa protein; non-histone chromosome protein 2-like 1; [U4/U6.U5] tri-snRNP 15.5 kD RNA binding protein; high mobility group-like nuclear protein 2 homolog 1; FA1; FA-1; NHPX; OTK27; SSFA1; SNRNP15-5;
Gene ID	4809
mRNA Refseq	NM_001003796
Protein Refseq	NP_001003796
MIM	601304
UniProt ID	P55769

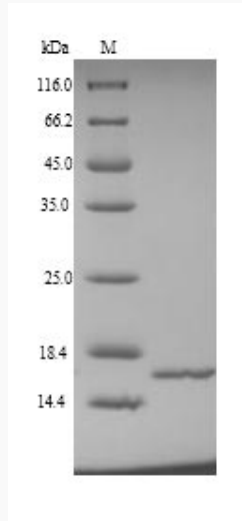
 Tel: 1-631-559-9269 1-516-512-3133

 Email: info@creative-biomart.com  Fax: 1-631-938-8127

 45-1 Ramsey Road, Shirley, NY 11967, USA



SDS-PAGE



Tel: 1-631-559-9269 1-516-512-3133

Email: info@creative-biomart.com Fax: 1-631-938-8127

45-1 Ramsey Road, Shirley, NY 11967, USA