

Recombinant Human NIPBL Protein, GST-tagged

Cat. No. NIPBL-5872H Lot. No. (See product label)

SPECIFICATION

Product Overview	Human NIPBL full-length ORF (AAH33847.1, 1 a.a. - 175 a.a.) recombinant protein with GST-tag at N-terminal.
Species	Human
Source	Wheat Germ
Description	<p>This gene encodes the homolog of the <i>Drosophila melanogaster</i> Nipped-B gene product and fungal Scc2-type sister chromatid cohesion proteins. The <i>Drosophila</i> protein facilitates enhancer-promoter communication of remote enhancers and plays a role in developmental regulation. It is also homologous to a family of chromosomal adherins with broad roles in sister chromatid cohesion, chromosome condensation, and DNA repair. The human protein has a bipartite nuclear targeting sequence and a putative HEAT repeat. Condensins, cohesins and other complexes with chromosome-related functions also contain HEAT repeats. Mutations in this gene result in Cornelia de Lange syndrome, a disorder characterized by dysmorphic facial features, growth delay, limb reduction defects, and mental retardation. Two transcript variants encoding different isoforms have been found for this gene. [provided by RefSeq]</p>
Molecular Mass	45.9 kDa
AA Sequence	<p>MKCLPENSAPLIEFANVSQGILLMLKQHLKLNLCGFSDSKIQKYSPPSESAKVYDKAI NRKTGVHFHFKPQTLDFLRSDMANSKITEEVKRSIVKQYLDFKLLMEHLDPDEEEEEEG EVSASTNARNKAITSLGGGSPKNNTAAETEDDES DGEDRGGGTSGVRRRRSQRIS</p>

 Tel: 1-631-559-9269 1-516-512-3133

 Email: info@creative-biomart.com  Fax: 1-631-938-8127

 45-1 Ramsey Road, Shirley, NY 11967, USA

	QRIT
Applications	Enzyme-linked Immunoabsorbent Assay Western Blot (Recombinant protein) Antibody Production Protein Array
Notes	Best use within three months from the date of receipt of this protein.
Storage	Store at -80 centigrade. Aliquot to avoid repeated freezing and thawing.
Storage Buffer	50 mM Tris-HCl, 10 mM reduced Glutathione, pH=8.0 in the elution buffer.
GENE INFORMATION	
Gene Name	NIPBL Nipped-B homolog (Drosophila) [Homo sapiens]
Official Symbol	NIPBL
Synonyms	NIPBL; Nipped-B homolog (Drosophila); nipped-B-like protein; DKFZp434L1319; FLJ11203; FLJ12597; FLJ13354; FLJ13648; IDN3; Scc2; sister chromatid cohesion 2 homolog (yeast); delangin; SCC2 homolog; sister chromatid cohesion 2 homolog; CDLS; CDLS1; IDN3-B; FLJ44854;
Gene ID	25836
mRNA Refseq	NM_015384
Protein Refseq	NP_056199
MIM	608667

 Tel: 1-631-559-9269 1-516-512-3133

 Email: info@creative-biomart.com  Fax: 1-631-938-8127

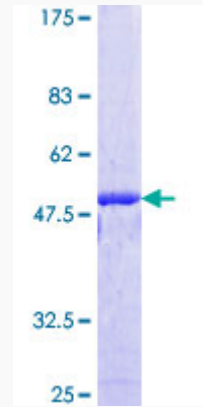
 45-1 Ramsey Road, Shirley, NY 11967, USA

UniProt ID

Q6KC79

Quality Control

Testing:



12.5% SDS-PAGE Stained with Coomassie Blue.

 Tel: 1-631-559-9269 1-516-512-3133

 Email: info@creative-biomart.com  Fax: 1-631-938-8127

 45-1 Ramsey Road, Shirley, NY 11967, USA