

Recombinant Human NKAIN1 protein, His-tagged

Cat. No. NKAIN1-8896H Lot. No. (See product label)

SPECIFICATION

Product Overview	Recombinant Human NKAIN1 protein(72-128 aa), fused with N-terminal His tag, was expressed in E.coli.
Species	Human
Source	E.coli
ProteinLength	72-128 aa
Form	The purified protein was lyophilized from sterile phosphate-buffered saline (PBS: 58 mM Na ₂ HPO ₄ , 17 mM NaH ₂ PO ₄ , 68 mM NaCl, pH 7.4). Prior to lyophilization, 5% (w/v) trehalose and 5% (w/v) mannitol were incorporated as cryoprotective excipients.
AASequence	LVTPVLNSRLALEDDHHVISVTGCLLDYPYIEALSSALQIFLALFGFVFACYVSKVFL
Purity	85%, by SDS-PAGE with Coomassie Brilliant Blue staining.
Storage	Store at 2-8°C for 1-2 weeks. Aliquot and store at -20°C to -80°C for up to 3 months, reconstitution with sterile water and addition of an equal volume of glycerol. Avoid repeat freeze-thaw cycles.
Reconstitution	Dissolve the product in 200 µl sterile water to achieve a working concentration of 0.25 g/µl. If experimental compatibility allows, mix the aqueous solution with an equal volume of glycerol (1:1 ratio) after initial reconstitution.

 Tel: 1-631-559-9269 1-516-512-3133

 Email: info@creative-biomart.com  Fax: 1-631-938-8127

 45-1 Ramsey Road, Shirley, NY 11967, USA

GENE INFORMATION

Gene Name NKAIN1 Na⁺/K⁺ transporting ATPase interacting 1 [Homo sapiens]

Official Symbol NKAIN1

Synonyms NKAIN1; Na⁺/K⁺ transporting ATPase interacting 1; FAM77C, family with sequence similarity 77, member C; sodium/potassium-transporting ATPase subunit beta-1-interacting protein 1; FLJ12650; family with sequence similarity 77, member C; Na(+)/K(+)-transporting ATPase subunit beta-1-interacting protein 1; FAM77C;

Gene ID 79570

mRNA Refseq NM_024522

Protein Refseq NP_078798

MIM 612871

UniProt ID Q4KMZ8

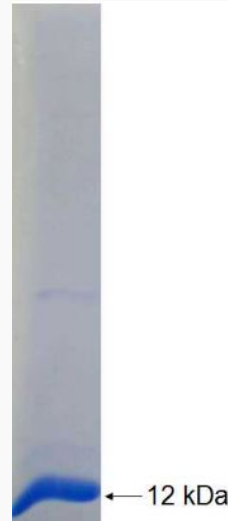
 Tel: 1-631-559-9269 1-516-512-3133

 Email: info@creative-biomart.com  Fax: 1-631-938-8127

 45-1 Ramsey Road, Shirley, NY 11967, USA



SDS-PAGE



Tel: 1-631-559-9269 1-516-512-3133

Email: info@creative-biomart.com Fax: 1-631-938-8127

45-1 Ramsey Road, Shirley, NY 11967, USA