

Recombinant Human NKIRAS1 protein, GST-tagged

Cat. No. NKIRAS1-1301H Lot. No. (See product label)

SPECIFICATION

Product Overview	Recombinant Human NKIRAS1 protein(1-192 aa), fused with N-terminal GST tag, was expressed in E.coli.
Species	Human
Source	E.coli
ProteinLength	1-192 aa
Form	The purified protein was lyophilized from sterile phosphate-buffered saline (PBS: 58 mM Na ₂ HPO ₄ , 17 mM NaH ₂ PO ₄ , 68 mM NaCl, pH 8.0). Prior to lyophilization, 5% (w/v) trehalose and 5% (w/v) mannitol were incorporated as cryoprotective excipients.
AASequence	MGKGCKVVVCGLLSVGKTAILEQLLYGNHTIGMEDCETMEDVYMASVETDRGVKEQ LHLYDTRGLQEGVELPKHYFSFADGFVLVYSVNNLESFQRVELLKKEIDKFKDKKEV AIVVLGNKIDLSEQRQVDAEVAQQWAKSEKVRLWEVTVTDRKTLIEPFTLLASKLSQ PQSKSSFPLPGRKNKGNSEN
Purity	90%, by SDS-PAGE with Coomassie Brilliant Blue staining.
Storage	Store at 2-8°C for 1-2 weeks. Aliquot and store at -20°C to -80°C for up to 3 months, reconstitution with sterile water and addition of an equal volume of glycerol. Avoid repeat freeze-thaw cycles.

 Tel: 1-631-559-9269 1-516-512-3133

 Email: info@creative-biomart.com  Fax: 1-631-938-8127

 45-1 Ramsey Road, Shirley, NY 11967, USA

Reconstitution

Dissolve the product in 200 µl sterile water to achieve a working concentration of 0.25 g/µl. If experimental compatibility allows, mix the aqueous solution with an equal volume of glycerol (1:1 ratio) after initial reconstitution.

GENE INFORMATION

Gene Name

NKIRAS1 NFKB inhibitor interacting Ras-like 1 [Homo sapiens]

Official Symbol

NKIRAS1

Synonyms

NKIRAS1; NFKB inhibitor interacting Ras-like 1; NFKB inhibitor interacting Ras like protein 1; NF-kappa-B inhibitor-interacting Ras-like protein 1; kappaB Ras1; KBRAS1; kappa B-ras 1; kappa B-Ras protein 1; I-kappa-B-interacting Ras-like protein 1; NFKB inhibitor interacting Ras-like protein 1; kappaB-Ras1;

Gene ID

28512

mRNA Refseq

NM_020345

Protein Refseq

NP_065078

MIM

604496

UniProt ID

Q9NYS0

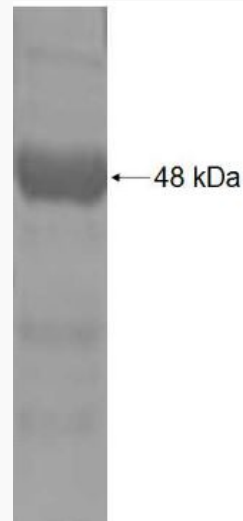
 Tel: 1-631-559-9269 1-516-512-3133

 Email: info@creative-biomart.com  Fax: 1-631-938-8127

 45-1 Ramsey Road, Shirley, NY 11967, USA



SDS-PAGE



Tel: 1-631-559-9269 1-516-512-3133

Email: info@creative-biomart.com Fax: 1-631-938-8127

45-1 Ramsey Road, Shirley, NY 11967, USA