

## Recombinant Human NKIRAS1 Protein, GST-tagged

**Cat. No.** NKIRAS1-5890H    **Lot. No.** (See product label)

### SPECIFICATION

<b>Product Overview</b>	Human NKIRAS1 partial ORF ( AAH12145, 1 a.a. - 100 a.a.) recombinant protein with GST-tag at N-terminal.
<b>Species</b>	Human
<b>Source</b>	Wheat Germ
<b>Description</b>	NKIRAS1 (NFKB Inhibitor Interacting Ras Like 1) is a Protein Coding gene. Among its related pathways are NF-KappaB Family Pathway. GO annotations related to this gene include GTP binding and GTPase activity. An important paralog of this gene is NKIRAS2.
<b>Molecular Mass</b>	36.74 kDa
<b>AA Sequence</b>	MGKGCKVVVCGLLSVGKTAILEQLLYGNHTIGMEDCETMEDVYMASVETDRGVKEQ LHLYDTRGLQEGVELPKHYFSFADGFVLVYSVNNLESFQRVELL
<b>Applications</b>	Enzyme-linked Immunoabsorbent Assay Western Blot (Recombinant protein) Antibody Production Protein Array
<b>Notes</b>	Best use within three months from the date of receipt of this protein.
<b>Storage</b>	Store at -80 centigrade. Aliquot to avoid repeated freezing and thawing.

 Tel: 1-631-559-9269    1-516-512-3133

 Email: [info@creative-biomart.com](mailto:info@creative-biomart.com)     Fax: 1-631-938-8127

 45-1 Ramsey Road, Shirley, NY 11967, USA

**Storage Buffer** 50 mM Tris-HCl, 10 mM reduced Glutathione, pH=8.0 in the elution buffer.

## GENE INFORMATION

**Gene Name** NKIRAS1 NFKB inhibitor interacting Ras-like 1 [ Homo sapiens ]

**Official Symbol** NKIRAS1

**Synonyms** NKIRAS1; NFKB inhibitor interacting Ras-like 1; NFKB inhibitor interacting Ras like protein 1; NF-kappa-B inhibitor-interacting Ras-like protein 1; kappaB Ras1; KBRAS1; kappa B-ras 1; kappa B-Ras protein 1; I-kappa-B-interacting Ras-like protein 1; NFKB inhibitor interacting Ras-like protein 1; kappaB-Ras1;

**Gene ID** 28512

**mRNA Refseq** NM\_020345

**Protein Refseq** NP\_065078

**MIM** 604496

**UniProt ID** Q9NYS0

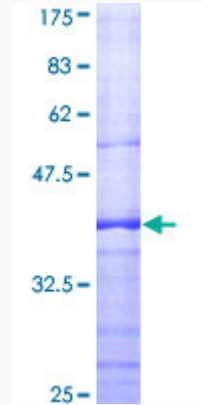
 Tel: 1-631-559-9269 1-516-512-3133

 Email: [info@creative-biomart.com](mailto:info@creative-biomart.com)  Fax: 1-631-938-8127

 45-1 Ramsey Road, Shirley, NY 11967, USA

**Quality Control**

**Testing:**



12.5% SDS-PAGE Stained with Coomassie Blue.

 Tel: 1-631-559-9269 1-516-512-3133

 Email: [info@creative-biomart.com](mailto:info@creative-biomart.com)  Fax: 1-631-938-8127

 45-1 Ramsey Road, Shirley, NY 11967, USA