

Recombinant Human NKRF Protein, His/GST-tagged

Cat. No. NKRF-783H Lot. No. (See product label)

SPECIFICATION

Product Overview	Recombinant Human NKRF(Met1~Val296) fused with His/GST tag at N-terminal was expressed in E. coli.
Species	Human
Source	E.coli
ProteinLength	Met1~Val296
Description	This gene encodes a transcriptional repressor that interacts with specific negative regulatory elements to mediate transcriptional repression of certain nuclear factor kappa B responsive genes. The protein localizes predominantly to the nucleolus with a small fraction found in the nucleoplasm and cytoplasm. Alternate splicing results in multiple transcript variants.
Form	PBS, pH7.4, containing 0.01% SKL, 1mM DTT, 5% Trehalose and Proclin300.
Molecular Mass	63.4kDa
Endotoxin	<1.0EU per 1g (determined by the LAL method)
Purity	> 92%
Applications	Positive Control; Immunogen; SDS-PAGE; WB. If bio-activity of the protein is needed, please check active protein.

 Tel: 1-631-559-9269 1-516-512-3133

 Email: info@creative-biomart.com  Fax: 1-631-938-8127

 45-1 Ramsey Road, Shirley, NY 11967, USA

Stability The thermal stability is described by the loss rate. The loss rate was determined by accelerated thermal degradation test, that is, incubate the protein at 37 centigrade for 48h, and no obvious degradation and precipitation were observed. The loss rate is less than 5% within the expiration date under appropriate storage condition.

Storage Avoid repeated freeze/thaw cycles. Store at 2-8 centigrade for one month. Aliquot and store at -80 centigrade for 12 months.

Reconstitution Reconstitute in PBS or others.

GENE INFORMATION

Gene Name [NKRF NFKB repressing factor \[Homo sapiens \]](#)

Official Symbol [NKRF](#)

Synonyms NKRF; NFKB repressing factor; NF kappaB repressing factor; NF-kappa-B-repressing factor; ITBA4; NRF; transcription factor NRF;

Gene ID [55922](#)

mRNA Refseq [NM_001173487](#)

Protein Refseq [NP_001166958](#)

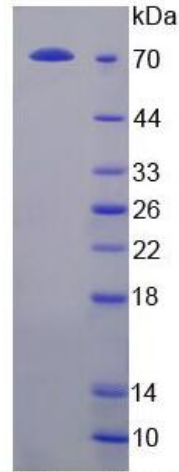
MIM [300440](#)

UniProt ID [O15226](#)

 Tel: 1-631-559-9269 1-516-512-3133

 Email: info@creative-biomart.com  Fax: 1-631-938-8127

 45-1 Ramsey Road, Shirley, NY 11967, USA



15% SDS-PAGE

Tel: 1-631-559-9269 1-516-512-3133

Email: info@creative-biomart.com Fax: 1-631-938-8127

45-1 Ramsey Road, Shirley, NY 11967, USA