

Recombinant Human NKX2-3 Protein, GST-tagged

Cat. No. NKX2-3-5898H Lot. No. (See product label)

SPECIFICATION

Product Overview	Human NKX2-3 full-length ORF (NP_660328.1, 1 a.a. - 293 a.a.) recombinant protein with GST-tag at N-terminal.
Species	Human
Source	Wheat Germ
ProteinLength	1-293 a.a.
Description	NKX2C is a member of the NKX family of homeodomain-containing transcription factors, which are implicated in many aspects of cell type specification and maintenance of differentiated tissue functions. See Harvey (1996) [PubMed 8812123] for a review of the structure, regulation, function, and evolution of NK2 homeobox genes with an emphasis on their roles in heart development.[supplied by OMIM
Molecular Mass	58.9 kDa
AA Sequence	MMLPSPVTSTPFSVKDILNLEQQHQHFHGAHLQADLEHHFHSA PCMLAAAEGTQFS DGGEDEEDEGEKLSYLNLAADGHGDSGLCPQGYVHTVLRDSCSEPKEHEEPP EVVRDRSQKSCQLKKSLETAGDCKAAEESERPKPRSRRKPRVLF SQAQVFELERRF KQQRYSAPEREHLASSLKLSTQVKIWFQNRRYKCKRQRQDKSLELG AHAPPPPP RRVAVPVLVRD GKPCVTPSAQAYGAPYSVGASAYSYN SFPAYGYGNSAAGPPRRP LPCSPPAARPEAAPL
Applications	Enzyme-linked Immunoabsorbent Assay

Tel: 1-631-559-9269 1-516-512-3133

Email: info@creative-biomart.com Fax: 1-631-938-8127

45-1 Ramsey Road, Shirley, NY 11967, USA

Western Blot (Recombinant protein)
 Antibody Production
 Protein Array

Notes	Best use within three months from the date of receipt of this protein.
Storage	Store at -80 centigrade. Aliquot to avoid repeated freezing and thawing.
Storage Buffer	50 mM Tris-HCl, 10 mM reduced Glutathione, pH=8.0 in the elution buffer.

GENE INFORMATION

Gene Name	NKX2-3 NK2 homeobox 3 [Homo sapiens]
Official Symbol	NKX2-3
Synonyms	NKX2-3; NK2 homeobox 3; NK 2 (Drosophila) homolog C , NK2 transcription factor related, locus 3 (Drosophila) , NKX2C; homeobox protein Nkx-2.3; CSX3; NKX2.3; NKX4 3; homeobox protein NK-2 homolog C; NK2 transcription factor related, locus 3; NK2.3; NKX2C; NKX4-3;
Gene ID	159296
mRNA Refseq	NM_145285
Protein Refseq	NP_660328
MIM	606727
UniProt ID	Q8TAU0

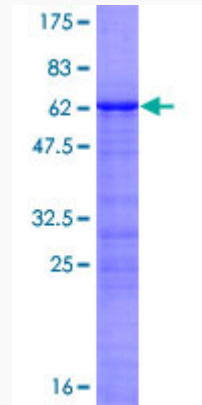
 Tel: 1-631-559-9269 1-516-512-3133

 Email: info@creative-biomart.com  Fax: 1-631-938-8127

 45-1 Ramsey Road, Shirley, NY 11967, USA

Quality Control

Testing:



12.5% SDS-PAGE Stained with Coomassie Blue.

 Tel: 1-631-559-9269 1-516-512-3133

 Email: info@creative-biomart.com  Fax: 1-631-938-8127

 45-1 Ramsey Road, Shirley, NY 11967, USA