

# Recombinant Human NKX2-5 Protein, MYC/DDK-tagged, C13 and N15-labeled

Cat. No. NKX2-5-340H Lot. No. (See product label)

## SPECIFICATION

<b>Product Overview</b>	NKX2 MS Standard C13 and N15-labeled recombinant protein (NP_004378) with a C-terminal MYC/DDK tag, was expressed in HEK293 cells.
<b>Species</b>	Human
<b>Source</b>	HEK293
<b>Description</b>	This gene encodes a homeobox-containing transcription factor. This transcription factor functions in heart formation and development. Mutations in this gene cause atrial septal defect with atrioventricular conduction defect, and also tetralogy of Fallot, which are both heart malformation diseases. Mutations in this gene can also cause congenital hypothyroidism non-goitrous type 5, a non-autoimmune condition. Alternative splicing results in multiple transcript variants. [provided by RefSeq, Oct 2009]
<b>Molecular Mass</b>	34.9 kDa
<b>AA Sequence</b>	MFPSPALTPTPFSVKDILNLEQQQRSLAAAGELSARLEATLAPSSCMLAAFKPEAYA GPEAAAPGLPELRAELGRAPSPAKCASAFPAAPAFYPRAYSDPDPKDPRAEKEL CALQKAVELEKTEADNAERPRARRRRKPRVLFSQAQVYELERRFKQQRYSAPERD QLASVLKLTSTQVKIWFQNRRYKCKRQRQDQTLELVGLPPPPPPPARRIAVPVLVRD GKPCLGDSAPYAPAYGVGLNPYGYNAYPAYPGYGGAACSPGYSCTAAYPAGPSPA QPATAAANNFVNFVGVGDLNAVQSPGIPQSNSGVSTLHGIRAWTRTRPLEQKLISEE

 Tel: 1-631-559-9269 1-516-512-3133

 Email: [info@creative-biomart.com](mailto:info@creative-biomart.com)  Fax: 1-631-938-8127

 45-1 Ramsey Road, Shirley, NY 11967, USA

DLAANDILDYKDDDDKV

**Purity** > 80% as determined by SDS-PAGE and Coomassie blue staining

**Stability** Stable for 3 months from receipt of products under proper storage and handling conditions.

**Storage** Store at -80 centigrade. Avoid repeated freeze-thaw cycles.

**Concentration** 50 µg/mL as determined by BCA

**Storage Buffer** 100 mM glycine, 25 mM Tris-HCl, pH 7.3.

## GENE INFORMATION

**Gene Name** [NKX2-5 NK2 homeobox 5 \[ Homo sapiens \(human\) \]](#)

**Official Symbol** [NKX2-5](#)

**Synonyms** NKX2-5; NK2 homeobox 5; cardiac specific homeo box, CSX, NK2 transcription factor related, locus 5 (Drosophila), NKX2E; homeobox protein Nkx-2.5; CSX1; NKX2.5; NKX4 1; tinman paralog (Drosophila); tinman paralog; homeobox protein CSX; cardiac-specific homeobox 1; homeobox protein NK-2 homolog E; NK2 transcription factor related, locus 5; CSX; VSD3; CHNG5; HLHS2; NKX2E; NKX4-1; FLJ52202; FLJ97166; FLJ97195; FLJ97197; FLJ99536;

**Gene ID** [1482](#)

**mRNA Refseq** [NM\\_004387](#)

**Protein Refseq** [NP\\_004378](#)

 Tel: 1-631-559-9269 1-516-512-3133

 Email: [info@creative-biomart.com](mailto:info@creative-biomart.com)  Fax: 1-631-938-8127

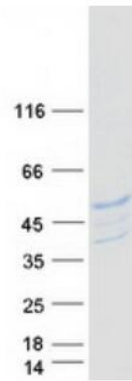
 45-1 Ramsey Road, Shirley, NY 11967, USA



MIM 600584

UniProt ID P52952

SDS-PAGE



Tel: 1-631-559-9269 1-516-512-3133

Email: [info@creative-biomart.com](mailto:info@creative-biomart.com) Fax: 1-631-938-8127

45-1 Ramsey Road, Shirley, NY 11967, USA