

Recombinant Human NKX2-6 Protein, Myc/DDK-tagged, C13 and N15-labeled

Cat. No. NKX2-6-3578H **Lot. No.** (See product label)

SPECIFICATION

Product Overview

NKX2 MS Standard C13 and N15-labeled recombinant protein (NP_001129743) with a C-terminal MYC/DDK tag, was expressed in HEK293 cells.

Species

Human

Source

HEK293

Description

This gene encodes a homeobox-containing protein that belongs to the NK-2 homeobox family. This protein is a vertebrate homolog of *Drosophila* homeobox-containing protein called 'tinman', which has been shown to be essential for development of the heart-like dorsal vessel. In conjunction with related gene, NKX2-5, this gene may play a role in both pharyngeal and cardiac embryonic development. Mutations in this gene are associated with persistent truncus arteriosus.

Molecular Mass

23.1 kDa

AA Sequence

MDAERMGEPQPGLNAASPLGGGTRVPERGVGNSGDSVRGGRSEQPKARQRRKP
 RVLFSQAQVLALERRFKQQRYSAPERHLSALQLTSTQVKIWFQNRRYKCKRQR
 QDKSLELAGHPLTPRRVAVPVLVLDGKPCGLPGPGAPAFPSYSAAVSPYSCYGGY
 SGAPYGAGYGTCYAGAPSGPAPHTPLASAGFGHGGQNATPQGHLAATLQGVRAW
 TRTRPLEQKLISEEDLAANDILDYKDDDDKV

Purity

> 80% as determined by SDS-PAGE and Coomassie blue staining

 Tel: 1-631-559-9269 1-516-512-3133

 Email: info@creative-biomart.com  Fax: 1-631-938-8127

 45-1 Ramsey Road, Shirley, NY 11967, USA

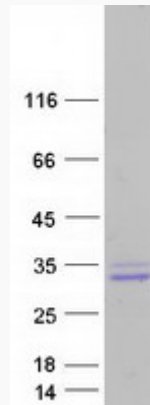
Stability	Stable for 3 months from receipt of products under proper storage and handling conditions.
Storage	Store at -80 centigrade. Avoid repeated freeze-thaw cycles.
Concentration	50 µg/mL as determined by BCA
Storage Buffer	100 mM glycine, 25 mM Tris-HCl, pH 7.3.
GENE INFORMATION	
Gene Name	NKX2-6 NK2 homeobox 6 [<i>Homo sapiens</i> (human)]
Official Symbol	NKX2-6
Synonyms	NKX2-6; NK2 homeobox 6; NK2 transcription factor related, locus 6 (<i>Drosophila</i>); homeobox protein Nkx-2.6; CSX2; NKX4 2; tinman paralog (<i>Drosophila</i>); tinman paralog; homeobox protein NKX2.6; homeobox protein NK2 homolog F; NK2 transcription factor related, locus 6; NKX2F; NKX4-2;
Gene ID	137814
mRNA Refseq	NM_001136271
Protein Refseq	NP_001129743
MIM	611770
UniProt ID	A6NCS4

 Tel: 1-631-559-9269 1-516-512-3133

 Email: info@creative-biomart.com  Fax: 1-631-938-8127

 45-1 Ramsey Road, Shirley, NY 11967, USA

SDS-PAGE



 Tel: 1-631-559-9269 1-516-512-3133

 Email: info@creative-biomart.com  Fax: 1-631-938-8127

 45-1 Ramsey Road, Shirley, NY 11967, USA