

Recombinant Human NKX3-1 Protein, Myc/DDK-tagged, C13 and N15-labeled

Cat. No. NKX3-1-469H **Lot. No.** (See product label)

SPECIFICATION

Product Overview	NKX3 MS Standard C13 and N15-labeled recombinant protein (NP_006158) with a C-terminal MYC/DDK tag, was expressed in HEK293 cells.
Species	Human
Source	HEK293
Description	This gene encodes a homeobox-containing transcription factor. This transcription factor functions as a negative regulator of epithelial cell growth in prostate tissue. Aberrant expression of this gene is associated with prostate tumor progression. Alternate splicing results in multiple transcript variants of this gene.
Molecular Mass	26.4 kDa
AA Sequence	MLRVPEPRPGEAKAEGAAPPTPSKPLTSFLIQDILRDGAQRQGGRTSSQRQRDPEP EPEPEPEGGRSRAGAQNQLSTGPRAAPEEAETLAETEPERHLGSYLLDSENTSGA LPRLPQTPKQPQKRSRAAFSHTQVIELERKFSHQKYL SAPER AHLAKNLKLTETQVKI WFQNRRYKTKRKQLSSELGDLEKHSSLPALKEEAFSRASLVSVYNSYPYPYLYCV GSWSPAFWTRTRPLEQKLISEEDLAANDILDYKDDDDKV
Purity	> 80% as determined by SDS-PAGE and Coomassie blue staining
Stability	Stable for 3 months from receipt of products under proper storage and handling conditions.

 Tel: 1-631-559-9269 1-516-512-3133

 Email: info@creative-biomart.com  Fax: 1-631-938-8127

 45-1 Ramsey Road, Shirley, NY 11967, USA

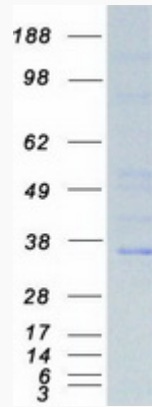
Storage	Store at -80 centigrade. Avoid repeated freeze-thaw cycles.
Concentration	50 µg/mL as determined by BCA
Storage Buffer	100 mM glycine, 25 mM Tris-HCl, pH 7.3.
GENE INFORMATION	
Gene Name	NKX3-1 NK3 homeobox 1 [Homo sapiens (human)]
Official Symbol	NKX3-1
Synonyms	NKX3-1; NK3 homeobox 1; NK homeobox (Drosophila), family 3, A, NK3 transcription factor related, locus 1 (Drosophila), NKX3A; homeobox protein Nkx-3.1; BAPX2; NKX3.1; NK homeobox, family 3, A; homeobox protein NK-3 homolog A; NK3 transcription factor homolog A; NK3 transcription factor related, locus 1; NKX3; NKX3A;
Gene ID	4824
mRNA Refseq	NM_006167
Protein Refseq	NP_006158
MIM	602041
UniProt ID	Q99801

 Tel: 1-631-559-9269 1-516-512-3133

 Email: info@creative-biomart.com  Fax: 1-631-938-8127

 45-1 Ramsey Road, Shirley, NY 11967, USA

SDS-PAGE



 Tel: 1-631-559-9269 1-516-512-3133

 Email: info@creative-biomart.com  Fax: 1-631-938-8127

 45-1 Ramsey Road, Shirley, NY 11967, USA