

Recombinant Human NKX6-1 Protein, His/GST-tagged

Cat. No. NKX6-1-567H Lot. No. (See product label)

SPECIFICATION

Product Overview	Recombinant Human NKX6-1(Met1~Ser367) fused with His/GST tag at N-terminal was expressed in E. coli.
Species	Human
Source	E.coli
ProteinLength	Met1~Ser367
Description	In the pancreas, NKX6.1 is required for the development of beta cells and is a potent bifunctional transcription regulator that binds to AT-rich sequences within the promoter region of target genes lype et al. (2004).
Form	PBS, pH7.4, containing 0.01% SKL, 1mM DTT, 5% Trehalose and Proclin300.
Molecular Mass	97.8kDa
Endotoxin	<1.0EU per 1g (determined by the LAL method)
Purity	> 90%
Applications	Positive Control; Immunogen; SDS-PAGE; WB. If bio-activity of the protein is needed, please check active protein.
Stability	The thermal stability is described by the loss rate. The loss rate was determined by

 Tel: 1-631-559-9269 1-516-512-3133

 Email: info@creative-biomart.com  Fax: 1-631-938-8127

 45-1 Ramsey Road, Shirley, NY 11967, USA

accelerated thermal degradation test, that is, incubate the protein at 37 centigrade for 48h, and no obvious degradation and precipitation were observed. The loss rate is less than 5% within the expiration date under appropriate storage condition.

Storage

Avoid repeated freeze/thaw cycles. Store at 2-8 centigrade for one month. Aliquot and store at -80 centigrade for 12 months.

Reconstitution

Reconstitute in PBS or others.

GENE INFORMATION

Gene Name

NKX6-1 NK6 homeobox 1 [Homo sapiens]

Official Symbol

NKX6-1

Synonyms

NKX6-1; NK6 homeobox 1; NK homeobox (Drosophila), family 6, A , NK6 transcription factor related, locus 1 (Drosophila) , NKX6A; homeobox protein Nkx-6.1; Nkx6.1; NK homeobox, family 6, A; homeobox protein NK-6 homolog A; NK homeobox, family 6, member A; NK6 transcription factor homolog A; NK6 transcription factor related, locus 1; NKX6A; NKX6.1;

Gene ID

4825

mRNA Refseq

NM_006168

Protein Refseq

NP_006159

MIM

602563

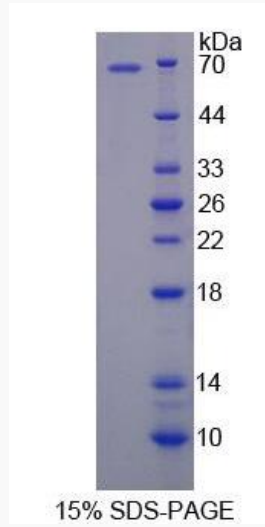
UniProt ID

P78426

 Tel: 1-631-559-9269 1-516-512-3133

 Email: info@creative-biomart.com  Fax: 1-631-938-8127

 45-1 Ramsey Road, Shirley, NY 11967, USA



 Tel: 1-631-559-9269 1-516-512-3133

 Email: info@creative-biomart.com  Fax: 1-631-938-8127

 45-1 Ramsey Road, Shirley, NY 11967, USA