

## Recombinant Human NLGN1 Protein, GST-tagged

Cat. No. NLGN1-5909H Lot. No. (See product label)

### SPECIFICATION

<b>Product Overview</b>	Human NLGN1 full-length ORF ( NP_055747.1, 1 a.a. - 823 a.a.) recombinant protein with GST-tag at N-terminal.
<b>Species</b>	Human
<b>Source</b>	Wheat Germ
<b>Description</b>	This gene encodes a member of a family of neuronal cell surface proteins. Members of this family may act as splice site-specific ligands for beta-neurexins and may be involved in the formation and remodeling of central nervous system synapses. [provided by RefSeq]
<b>Molecular Mass</b>	118.4 kDa
<b>AA Sequence</b>	<p>MALPRCTWPNYVWRAVMACLVHRGLGAPLTL CMLGCLLQAGHVLSQKLDDVDPLV  ATNFGKIRGIKKELNNEILGPVIQFLGVPYAAPPTGERRFQPPEPPSPWSDIRNATQF  APVCPQNIIDGRLPEVMLPVWFTNNDLVVSSYVQDQSEDCLYLNIYVPTEDDIRDSG  GPKPVMVYIHGGSYMEGTGNLYDGSVLASYGNVIVITVNYRLGVLGFLSTGDQAAK  GNYGLLDLIQALRWTSENIGFFGGDPLRITVFGSGAGGSCVNLLTLSHYSEG NRWS  NSTKGLFQRAIAQSGTALSSWAVSFQPAKYARMLATKVGCNVSDTVELVECLQKKP  YKELVDQDIQPARYHIAFGPVIDGDVIPDDPQILMEQGEFLNYDIMLGVNQGEGLKFV  ENIVSDDGISASDFDFAVSNFVDNLYGYPEGKVDLRETIKFMYPDWADRHNPETRR  KTLALFTDQWVAVATADLHSNFGSPTYFYAFYHHCQTDQVPAWADAAHGDE  VPYVLGIPMIGPTELFPCNFSKNDVMLS AVVMTYWTNFAKTGDPNQVPVQDTKFIHT</p>

Tel: 1-631-559-9269 1-516-512-3133

Email: [info@creative-biomart.com](mailto:info@creative-biomart.com) Fax: 1-631-938-8127

45-1 Ramsey Road, Shirley, NY 11967, USA

KPNRFEEVAWTRYSQKDQLYLHIGLKPRVKEHYRANKVNLWLELVPHLHNLNDISQ  
 YTSTTTKVPSTDITFRPTRKNSVPVTSAPPTAKQDDPKQQPSPFSVDQRDYSTEHSV  
 TIAVGASLLFLNILAFAALYYKKDKRRHDVHRRRCSPQRRTTNDLTHAQEEEIMSLQMK  
 HTDLDECEESIHPHEVVLRTACPPDYTLAMRRSPDDVPLMTPNTITMIPNTIPGIQPL  
 HTFNTFTGGQNNTLPHPHPHPHSHSTTRV

**Applications**  
 Enzyme-linked Immunoabsorbent Assay  
 Western Blot (Recombinant protein)  
 Antibody Production  
 Protein Array

**Notes**  
 Best use within three months from the date of receipt of this protein.

**Storage**  
 Store at -80 centigrade. Aliquot to avoid repeated freezing and thawing.

**Storage Buffer**  
 50 mM Tris-HCl, 10 mM reduced Glutathione, pH=8.0 in the elution buffer.

## GENE INFORMATION

**Gene Name**  
 NLGN1 [neuroigin 1 \[ Homo sapiens \]](#)

**Official Symbol**  
 NLGN1

**Synonyms**  
 NLGN1; neuroigin 1; neuroigin-1; KIAA1070; NL1; MGC45115;

**Gene ID**  
 22871

**mRNA Refseq**  
 NM\_014932

**Protein Refseq**  
 NP\_055747

 Tel: 1-631-559-9269 1-516-512-3133

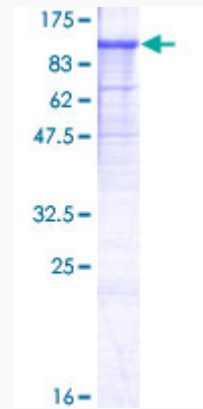
 Email: [info@creative-biomart.com](mailto:info@creative-biomart.com)  Fax: 1-631-938-8127

 45-1 Ramsey Road, Shirley, NY 11967, USA

MIM 600568

UniProt ID Q8N2Q7

Quality Control  
Testing:



12.5% SDS-PAGE Stained with Coomassie Blue.

Tel: 1-631-559-9269 1-516-512-3133

Email: [info@creative-biomart.com](mailto:info@creative-biomart.com) Fax: 1-631-938-8127

45-1 Ramsey Road, Shirley, NY 11967, USA